

Аксессуары

Описание

По вопросам продаж и поддержки обращайтесь:

Алматы (727)345-47-04
Ангарск (3955)60-70-56
Архангельск (8182)63-90-72
Астрахань (8512)99-46-04
Барнаул (3852)73-04-60
Белгород (4722)40-23-64
Благовещенск (4162)22-76-07
Брянск (4832)59-03-52
Владивосток (423)249-28-31
Владикавказ (8672)28-90-48
Владимир (4922)49-43-18
Волгоград (844)278-03-48
Вологда (8172)26-41-59
Воронеж (473)204-51-73
Екатеринбург (343)384-55-89

Иваново (4932)77-34-06
Ижевск (3412)26-03-58
Иркутск (395)279-98-46
Казань (843)206-01-48
Калининград (4012)72-03-81
Калуга (4842)92-23-67
Кемерово (3842)65-04-62
Киров (8332)68-02-04
Коломна (4966)23-41-49
Кострома (4942)77-07-48
Краснодар (861)203-40-90
Красноярск (391)204-63-61
Курск (4712)77-13-04
Курган (3522)50-90-47
Липецк (4742)52-20-81

Магнитогорск (3519)55-03-13
Москва (495)268-04-70
Мурманск (8152)59-64-93
Набережные Челны (8552)20-53-41
Нижний Новгород (831)429-08-12
Новокузнецк (3843)20-46-81
Ноябрьск (3496)41-32-12
Новосибирск (383)227-86-73
Омск (3812)21-46-40
Орел (4862)44-53-42
Оренбург (3532)37-68-04
Пенза (8412)22-31-16
Петрозаводск (8142)55-98-37
Псков (8112)59-10-37
Пермь (342)205-81-47

Ростов-на-Дону (863)308-18-15
Рязань (4912)46-61-64
Самара (846)206-03-16
Санкт-Петербург (812)309-46-40
Саратов (845)249-38-78
Севастополь (8692)22-31-93
Саранск (8342)22-96-24
Симферополь (3652)67-13-56
Смоленск (4812)29-41-54
Сочи (862)225-72-31
Ставрополь (8652)20-65-13
Сургут (3462)77-98-35
Сыктывкар (8212)25-95-17
Тамбов (4752)50-40-97
Тверь (4822)63-31-35

Тольятти (8482)63-91-07
Томск (3822)98-41-53
Тула (4872)33-79-87
Тюмень (3452)66-21-18
Ульяновск (8422)24-23-59
Улан-Удэ (3012)59-97-51
Уфа (347)229-48-12
Хабаровск (4212)92-98-04
Чебоксары (8352)28-53-07
Челябинск (351)202-03-61
Череповец (8202)49-02-64
Чита (3022)38-34-83
Якутск (4112)23-90-97
Ярославль (4852)69-52-93

Россия +7(495)268-04-70

Казахстан +7(727)345-47-04

Беларусь +(375)257-127-884

Узбекистан +998(71)205-18-59

Киргизия +996(312)96-26-47

эл.почта: mih@nt-rt.ru || сайт: <https://martinchrist.nt-rt.ru/>

Starter package

Accessories for our smallest unit, Alpha 1–2 LDplus, for drying in round-bottom flasks, wide-neck bottles or ampoules or on unheated shelves.



Starter product package with Alpha 1–2LDplus

Starter

3 shelves dia. 200 mm = 920 cm ² , distance between shelves 85 mm, additional ports for 8 flasks, round-bottom flasks and wide-neck bottles or distributor			
System	Alpha 1-2LDplus (item no. 101521)		
Description	Item number	Quantity	Page
1 Vacuum sensor	125478	1	88
2 Vacuum hose	125702	1	86
3 Base plate	120890	1	36
4 Three unheated shelves	120893	1	27
5 Acrylic drying chamber with 8 ports	121455	1	20
6 Rubber valves	121860	8	60
7 Vacuum pump RZ-2,5 (2.25 m ³ /h)	125302	1	85
8 Exhaust filter	125501	1	87

Routine package

Accessories for the Beta series for drying in round-bottom flasks, wide-neck bottles or vials or on unheated shelves with relatively high specimen volume.



Routine product package with Beta 2–8 LSCbasic

Routine

Drying chamber with 24 ports for bottles, round-bottom flasks and wide-neck bottles or distributor for ampoules

System	Beta 2–8 LSCbasic		
Description	Item number	Quantity	Page
1 Vacuum sensor	125478	1	88
2 Vacuum pump RZ-6	125307	1	85
3 Exhaust filter	125501	1	87
4 Vacuum hose	125702	1	86
5 Acrylic drying chamber	121550	1	22
6 Extra acrylic drying chamber	121850	1	22
7 Rubber valve for connecting vessels	121860	24	60
8 Drip tray for acrylic drying chamber	121360	1	37

Pharmacy product package

Accessories for the Alpha LSCplus series for carrying out the complete freeze drying process, including connection of crimp-seal vials under vacuum or inert gas.



Pharmacy 1 product package with Alpha 2-4 LSCplus

Pharmacy 1

Freezing and drying ice condenser chamber (method A) cooled shelves with sealing device (dia. 200mm, total area 0.031 m²)			
System	Alpha 2-4LSCplus (item no. 102142)		
Description	Item number	Quantity	Page
1 Extension unit HED-16 LSCplus	125041	1	
2 Vacuum pump RZ-2,5 (2.25 m³/h)	125302	1	85
3 Exhaust filter	125501	1	87
4 Vacuum hose with standard flange couplings	125702	1	86
5 Electromagnetic pressure control and stop valve	125910	1	87
6 Sealing device integrated in acrylic lid	120861	1	30

Dish Drying 1 product package

Accessories for laboratory systems with LSCplus controller for drying relatively large specimen volumes in dishes or vessels (or in aluminium blocks if necessary).



Dish Drying 1 product package with Alpha 1-4 LSCplus

Dish Drying 1

10 heated shelves (dia. 200 mm; total area 0.31 m², distance between shelves 25 mm – can be adjusted by removing shelves)			
System	Alpha 1-4 LSCplus (item no. 102141)		
Description	Item number	Quantity	Page
1 Extension unit HED-16 LSCplus	125041	1	
2 Vacuum pump RZ-6	125307	1	85
3 Exhaust filter	125501	1	87
4 Vacuum hose with standard flange couplings	125702	1	86
5 Electromagnetic pressure control and stop valve	125910	1	87
6 Base plate	120880	1	34
7 Frame for 10 shelves	121160	1	35
8 Shelves with rim, dia. 200 mm, with LyoBus-Modul	122576	10	34
9 Acrylic drying chamber	121558	1	21

Pharmacy 2 product package

Accessories for laboratory systems with LSCplus controller for drying relatively large product volumes in crimp-seal vials, including connection under vacuum or inert gas.



Pharmacy 2 product package with Alpha 2-4 LSCplus

Pharmacy 2

4 heated shelves with sealing device (dia. 250 mm, total area 0.18 m², distance between shelves 50 mm – can be adjusted by removing shelves)			
System	Alpha 2–4LSCplus (item no. 102142)		
Description	Item number	Quantity	Page
1 Extension unit HED-16 LSCplus	125041	1	
2 Vacuum pump RZ-6	125307	1	85
3 Exhaust filter	125501	1	87
4 Vacuum hose with standard flange couplings	125702	1	86
5 Electromagnetic pressure control and stop valve	125910	1	87
6 Base plate	120880	1	34
7 Sealing device with 1 shelf	120841	1	31
8 Shelf with rim	120830	3	31
9 Acrylic drying chamber	121505	1	21

Flask Drying product package

Accessories for the Gamma and Delta LSCplus series for drying in round-bottom flasks, wide-neck bottles or ampoules.



Flask Drying product package with Gamma 2–16 LSCplus

Flask Drying

Drying manifold for 24 round-bottom flasks / wide-neck bottles or distributor for ampoules			
System	Gamma 2–16 LSCplus (item no. 102211)		
Description	Item number	Quantity	Page
1 Vacuum pump RC-6	125295	1	84
2 Vacuum hose with standard flange couplings	125702	1	86
3 Electromagnetic pressure control and stop valve	125911	1	
4 Solvent-resistant manifold with 24 rubber valves	112237	1	39
5 Drip tray	121360	1	39

Dish Drying 2 product package

Accessories for the Delta (and Gamma) LSCplus series for drying very large specimen volumes in dishes.



Dish Drying 2 product package with Delta 2-24 LSCplus

Dish Drying 2

8 heatable shelves (dia. 375 mm, total area 0.88 m², distance between shelves 48 mm)			
System	Delta 2–24LSCplus (item no. 102301)		
Description	Item number	Quantity	Page
1 Vacuum pump 20 m³/h	125263	1	84
2 Exhaust filter	125502	1	88
3 Electromagnetic pressure control and stop valve	125911	1	
4 Plate frame with 8 electrically heatable shelves	122826	1	36
5 Acrylic drying chamber	121529	1	25
6 Lifting hoist for acrylic drying chamber, electronic control	121914	1	

3.1 Drying Chambers

Drying chambers Ø 240 mm (for Alpha 1–2 LDplus)

The drying chamber can be placed directly on top of any laboratory system. A base plate is additionally necessary when shelves and racks are used.



Acrylic drying chamber

Order number

121450

Diameter	240 mm
Clear height	285 mm
Weight approx.	3.6 kg
Features	With NS 45/40 ground joint stoppers
Remark	Alpha 1-2 LDplus

Acrylic drying chamber

Order number

121454

Diameter	240 mm
Clear height	285 mm
Weight approx.	3.6 kg
Features	With 6 ports for individually closable rubber valves
Remark	Alpha 1-2 LDplus

Acrylic drying chamber

Order number

121455

Diameter	240 mm
Clear height	285 mm
Weight approx.	3.6 kg
Features	With 8 ports for individually closable rubber valves, including NS 45/40 ground joint stoppers
Remark	Alpha 1-2 LDplus

Overview

Ø 240 mm only for Alpha 1–2 LDplus

Item number	Height [mm]	Connections	Weight [kg]
121450	285		3.6
121454	285	6	3.6
121455	285	8	3.6



Stainless steel drying chamber

Order number

121536

Diameter	240 mm
Clear height	295 mm
Weight	8 kg
Features	With adapter ring, only usable in combination with glass lid 121398
Remark	Alpha 1-2 LDplus



Connection ring, stainless steel

Order number

121534

Diameter	240 mm
Clear height	55 mm
Weight	2.7 kg
Features	With 8 ports for rubber valves including adapter ring; can only be used in combination with glass lid 121398 and stainless steel drying chamber 121536
Connection	For connecting vessels with DIN female ground joint NS29/32: 8x 100 ml, 8x 250 ml, 8x 500 ml, 8x 1000 ml, 8x 2000 ml round-bottom flasks 8x 75 ml, 8x 150 ml, 8x 300 ml, 8x 600 ml, 8x 1200 ml wide-neck filter bottles
Remark	Alpha 1-2 LDplus

Drying chambers Ø 300 mm (not for Alpha 1-2 LDplus)

Acrylic drying chamber

Order number

121500

Diameter	300 mm
Clear height	295 mm
Weight approx.	4.5 kg
Features	With stoppers
Remark	For all laboratory units except of Alpha 1-2 LDplus

Acrylic drying chamber

Order number

121505

Diameter	300 mm
Clear height	460 mm
Weight approx.	6 kg
Features	With stoppers
Remark	For all laboratory units except of Alpha 1-2 LDplus

Acrylic drying chamber

Order number

121558

Diameter	300 mm
Clear height	515 mm
Weight approx.	6.4 kg
Features	Suitable for hoist
Remark	For all laboratory units except of Alpha 1-2 LDplus



Acrylic drying chamber		Order number	121550
Diameter	300 mm		
Clear height	295 mm		
Weight approx.	5.1 kg		
Connection	With 12 ports for individually closable rubber valves		
Features	With stoppers		
Remark	For all laboratory units except of Alpha 1-2 LDplus		

Additional acrylic chamber		Order number	121850
Diameter	300 mm		
Clear height	295 mm		
Weight approx.	4.8 kg		
Connection	With 12 ports for individually closable rubber valves		
Remark	For all laboratory units except of Alpha 1-2 LDplus		

Acrylic drying chamber		Order number	121555
Diameter	300 mm		
Clear height	460 mm		
Weight approx.	6 kg		
Connection	With 12 ports for individually closable rubber valves		
Features	With stoppers		
Remark	For all laboratory units except of Alpha 1-2 LDplus		

Acrylic drying chamber		Order number	121557
Diameter	300 mm		
Clear height	515 mm		
Weight approx.	6.6 kg		
Connection	With 12 ports for individually closable rubber valves		
Features	Suitable for hoist		
Remark	For all laboratory units except of Alpha 1-2 LDplus		

Overview

Ø 300 mm for Alpha to Delta

Item number	Height [mm]	Connections	Weight [kg]
121500	295		4.5
121550	295	12	5.1
121850	295	12	4.8
121505	460		6
121555	460	12	5.1
121558	515		6.4
121557	515	12	6.6



Stainless steel drying chamber

Order number 121537

Diameter	300 mm
Clear height	295 mm
Weight approx.	5.4 kg
Related items	Only suitable for use with glass lid 121411
Features	With adapter ring
Remark	For all laboratory units except of Alpha 1-2 LDplus

Stainless steel drying chamber

Order number 121538

Diameter	300 mm
Clear height	460 mm
Weight approx.	8.6 kg
Related items	Only suitable for use with glass lid 121411
Features	With adapter ring
Remark	For all laboratory units except of Alpha 1-2 LDplus



Conection ring, stainless steel

Order number 121535

Diameter	300 mm
Height	55 mm
Weight	2 kg
Connection	For connecting vessels with DIN female ground joint NS29/32: 12x 100 ml, 12x 250 ml, 12x 500 ml, 12x 1000 ml, 12x 2000 ml round-bottom flasks • 12x 75 ml, 12x 150 ml, 12x 300 ml, 12x 600 ml, 12x 1200 ml wide-neck filter bottles
Related items	Only usable for use with glass lid 121411 and stainless steel drying chamber 121537 or 121538
Features	With adapter ring
Remark	For all laboratory units except of Alpha 1-2 LDplus

Drying chambers Ø 457 mm (not suitable for use with Alpha 1–2 LDplus)

- Adapter flange item no. 120901 required for Alpha 1/2–4 LSCbasic and Beta 1/2–8 LSCbasic
- Adapter flange item no. 120881 required for Alpha 1/2–4 LSCplus and Beta 1/2–8 LSCplus



Acrylic drying chamber

Order number

121511

Diameter	457 mm
Clear height	340 mm
Weight approx.	12.7 kg
Features	With hoisting eye including connection for lifting device
Remark	For all laboratory units except of Alpha 1-2 LDplus

Acrylic drying chamber

Order number

121515

Diameter	457 mm
Clear height	340 mm
Weight approx.	12.7 kg
Features	With 18 individually closable rubber valves, hoisting eye including connection for lifting device
Remark	For all laboratory units except of Alpha 1-2 LDplus

Acrylic drying chamber

Order number

121517

Diameter	457 mm
Clear height	460 mm
Weight approx.	14.3 kg
Features	With hoisting eye including connection for lifting device
Remark	For all laboratory units except of Alpha 1-2 LDplus



Acrylic drying chamber

Order number

121521

Diameter	457 mm
Clear height	460 mm
Weight approx.	14.3 kg
Features	With 18 ports for rubber valves, hoisting eye including connection for lifting device
Remark	For all laboratory units except of Alpha 1-2 LDplus



Acrylic drying chamber		Order number	121523
Diameter	457 mm		
Clear height	565 mm		
Weight approx.	15.8 kg		
Features	With hoisting eye including connection for lifting device		
Remark	For all laboratory units except of Alpha 1-2 LDplus		

Acrylic drying chamber		Order number	121527
Diameter	457 mm		
Clear height	565 mm		
Weight approx.	15.8 kg		
Features	With 18 ports for rubber valves, with hoisting eye including connection for lifting device		
Remark	For all laboratory units except of Alpha 1-2 LDplus		

Acrylic drying chamber		Order number	121529
Diameter	457 mm		
Clear height	693 mm		
Weight approx.	17.6 kg		
Features	With hoisting eye including connection for lifting device		
Remark	For all laboratory units except of Alpha 1-2 LDplus		

Acrylic drying chamber		Order number	121531
Diameter	457 mm		
Clear height	693 mm		
Weight approx.	17.6 kg		
Features	With 18 ports for rubber valves, hoisting eye including connection for lifting device		
Remark	For all laboratory units except of Alpha 1-2 LDplus		

Overview

Ø 457 mm for Alpha to Delta

Item number	Height [mm]	Connections	Weight [kg]
121511	340		12.7
121515	340	18	12.7
121517	460		14.3
121521	460	18	14.3
121523	565		15.8
121527	565	18	15.8
121529	693		17.6
121531	693	18	17.6



Stoppers for acrylic chambers

Order number 121410

NS	45/40
Colour	Black
Remark	Also usable with acrylic lid (121404) and glass lid (121411)



Rubber stoppers

Order number 492299

Function	For closing ports in acrylic chambers
Colour	Grey



Silicone cap

Order number 492300

Function	For ports of acrylic chambers
----------	-------------------------------

3.2 Unheated shelves

Shelves



3 stainless steel shelves

Order number

120893

Diameter	200 mm
High approx.	220 mm
Heating/cooling	Unheated
Features	Spacing between shelves 85 mm
Remark	Only for Alpha 1–2LDplus

3 stainless steel shelves

Order number

120903

Diameter	265 mm
Height approx.	220 mm
Heating/cooling	Unheated
Features	Spacing between shelves 79 mm

5 stainless steel shelves

Order number

120902

Diameter	265 mm
High approx.	390 mm
Heating/cooling	Unheated
Features	Spacing between shelves 79 mm



5 stainless steel shelves

Order number

112229

Diameter	360 mm
Heating/cooling	Unheated
Features	Spacing between shelves 70 mm
Remark	Not for Alpha 1–2LDplus



1 aluminium shelf with rim and feet

Order number

112279

Spacing	33 mm
Diameter	265 mm
Heating/cooling	Unheated
Features	Stackable up to 10 high
Remark	Not for Alpha 1–2 LDplus

1 aluminium shelf with rim and feet

Order number

112318

Diameter	200 mm
Heating/cooling	Unheated
Remark	For use with Alpha 1–2LDplus and other laboratory freeze dryers

Number of drying vessels per shelf, order number 120902 and 120903

Order number of drying vessels	ID code Nominal capacity (ml)	Dimensions Ø (mm)	Dimensions height (mm)	Content with 1 cm layer		Number	Min. necessary spacing
				Static (ml)	Dynamic (ml) *		
127502	2 ml	12	121	0.6	1.2 (sh. f.)	345	125
127505	5 ml	12	156	0.6	2.5 (sh. f.)	345	160
127510	10 ml	16	156	1.2	3.5 (sh. f.)	185	160
127572	2 R	16	35	1.2		185	50
127576	6 R	22	40	3.0		100	55
127580	10 R	24	45	4.5		88	60
127582	20 R	30	55	6.0		54	70
127585	50 H	42.5	73	12.0	35–40 (sp. f.)	25	88
127590	100 H	51.6	94.5	18.0	65–70 (sp. f.)	16	110
127603	300	78	140	38.0	125–135 (sp. f.)	7	162
127605	500	78	207	38.0	250–300 (sp. f.)	7	229
127000		65	20	28.0		11	25
127010		75	20	45.0		8	25
127073		200	22	300.0		1	25

* sh. f. = shell freezing; sp. f. = spin freezing (see introduction)



Rack		Order number	127202
Function	To hold 10 (11) microtiter plates (no deep-well plates)		
Clearance	20 mm		
Material	Anodised aluminium plate holders and stainless steel spacers		
Features	If the microtiter plates are placed in this rack for freezing (externally), the specially formed anodised aluminium plate holders act as cold buffers, which prevents partial or full thawing of the specimens at the start of the process		
Remark	Use base plate 120906 for Alpha to Delta		
Dimensions	Height 283.5 mm, depth 97.5 mm, width 133.5 mm		

Rack		Order number	127203
Function	To hold 1 deep-well plate or 1 microtiter plate		
Clearance	50 mm		
Material	Anodised aluminium plate holders and stainless steel spacers		
Features	If the microtiter plates are placed in this rack for freezing (externally), the specially formed anodised aluminium plate holders act as cold buffers, which prevents partial or full thawing of the specimens at the start of the process. Shelves can be stacked up to 5 high		
Remark	For Alpha to Delta		



Rack		Order number	110394
Function	To hold 6 microtiter plates or 6 deep-well plates		
Clearance	85 mm		
Material	Anodised aluminium with stainless steel spacers in three levels		
Features	Not stackable		
Remark	Also for Alpha 1–2 LDplus		



Rack		Order number	110527
Function	To hold 5 microtiter plates		
Clearance	25 mm		
Material	Stainless steel with PDVF feet		
Features	Racks can be stacked up to 3 high		
Remark	Also for Alpha 1–2 LDplus		
Dimensions	Height 137 mm, depth 130.6 mm, width 89.5 mm		

Sealing devices for LDplus / LSCbasic controller



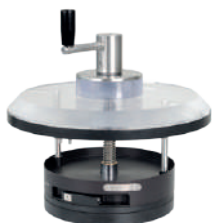
Sealing device with 2 shelf with rim		Order number	121015
Diameter	200 mm		
Temperature control system	None		
Extension	Shelves, separation 70 mm; with just one shelf 152 mm		
Features	Only in combination with base plate 120890		
Remark	For Alpha 1–2 LDplus		
Hood	121450 or 121455 can be used		

Sealing device with 1 shelf with rim		Order number	121020
Diameter	250 mm		
Temperature control system	None		
Extension	Can be extended to 2 shelves (max.) with shelf 120959		
Remark	For Alpha 1/2–4 LSCbasic and Beta 1/2–8 LSCbasic		
Hood	121500 or 121550 can be used		

Sealing device with 1 shelf with rim		Order number	121021
Diameter	250 mm		
Temperature control system	None		
Extension	Can be extended to max. 4 shelves (120959)		
Remark	For Alpha 1/2–4 LSCbasic and Beta 1/2–8 LSCbasic		
Hood	121505 or 121555 can be used		

3.3 Heated shelves

Sealing devices for LSCplus controller (wireless)



Sealing device with 1 shelf

Order number 120860

Diameter	200 mm
Function	For sealing injection vials with serrated rubber stoppers under vacuum or inert gas
Temperature control system	Electrical heating with built-in sensor PT 100 and LyoBus-Modul
Weight approx.	6.5 kg
Remark	Max. vessel height 70 mm; for LSCplus controller



Fan

Order number 120862

Diameter	200 mm
Function	For circulation of cold air
Weight approx.	
Remark	For LSCplus controller; integrated into 120860, 120861 and 120761

Number of drying vessels per shelf, order number 120860 and 121009

Order number of drying vessels	ID code Nominal capacity (ml)	Dimensions Ø (mm)	Dimensions height (mm)	Content with 1 cm layer		Number
				Static (ml)	Dynamic (ml) *	
127572	2 R	16	35	1.2		116
127576	6 R	22	40	3.0		60
127580	10 R	24	45	4.5		48
127582	20 R	30	55	6.0		29
127585	50 H	42.5	73	12.0	35–40 (sp. f.)	15
127001		65	20	28.0		5
127010		75	20	45.0		4

* sh. f. = shell freezing; sp. f. = spin freezing (see introduction)



Sealing device with max. 2 shelves

Order number 120821

Diameter	250 mm
Function	For sealing injection vials with serrated rubber stoppers under vacuum or inert gas
Temperature control system	Electrical heating with built-in sensor PT 100 and LyoBus-Modul
Extension	Can be extended to max. 2 shelves (120830)
Weight approx.	8 kg
Remark	For LSCplus controller

Options

Shelf arrangement	Clearance between shelves (mm)	Usable shelf area (cm ²)
1	110 to 35	450
2	2x 45 to 35	900

Sealing devices for LSCplus controller (wireless)



Sealing device with max. 4 shelves

Order number 120841

Diameter	250 mm
Function	For sealing injection vials with serrated rubber stoppers under vacuum or inert gas
Temperature control system	Electrical heating with built-in sensor PT 100 and LyoBus-Modul
Extension	Can be extended to max. 4 shelves (120830)
Features	Height of pressure plate is adjustable
Weight approx.	8.4 kg
Remark	For LSCplus controller

Options

Shelf arrangement	Clearance between shelves (mm)	Usable shelf area (cm²)
1	290 to 35	450
2	2x 135 to 35	900
3	3x 83 to 35	1350
4	4x 50 to 35	1800



Shelf

Order number 120830

Diameter	250 mm
Surface	Black anodised
Temperature control system	Electrical heating with built-in sensor PT 100 and LyoBus-Modul
Use	For item 120821 and 120841



Fan

Order number 120801

Diameter	250 mm
Function	For circulation of cold air
Weight approx.	1.1 kg
Remark	For LSCplus controller; integrated into 120821 and 120841

Number of drying vessels per shelf order number 120821, 120841 and 120830

Order number of drying vessels	ID code Nominal capacity (ml)	Dimensions Ø (mm)	Dimensions height (mm)	Content with 1 cm layer		Number	Min. necessary shelf area and spacing
				Static (ml)	Dynamic (ml) *		
127502	2 ml	12	121	0.6	1.2 (sh. f.)	280	125
127505	5 ml	12	156	0.6	2.5 (sh. f.)	280	160
127510	10 ml	16	156	1.2	3.5 (sh. f.)	154	160
127572	2 R	16	35	1.2		154	50
127576	6 R	22	40	3.0		80	55
127580	10 R	24	45	4.5		67	60
127582	20 R	30	55	6.0		45	70
127585	50 H	42.5	73	12.0	35–40 (sp. f.)	19	88
127590	100 H	51.6	94.5	18.0	65–70 (sp. f.)	14	110
127603	300	78	140	38.0	125–135 (sp. f.)	6	162
127605	500	78	207	38.0	250–300 (sp. f.)	6	229
127000		65	20	28.0		8	25
127010		75	20	45.0		6	25

* sh. f. = shell freezing; sp. f. = spin freezing (see introduction)

Shelves for single-chamber method ("inside") for LSCplus controller



Shelves with integrated acrylic lid

Order number 120861

Diameter	200 mm
Material	Aluminium, black anodised
Temperature control system	Electrical heating with built-in sensor PT 100 and LyoBus-Modul
Weight	
Remark	Max. vessel height 70 mm; for LSCplus controller



Shelves with integrated acrylic lid

Order number 120761

Diameter	200 mm
Material	Aluminium, black anodised
Temperature control system	Electrical heating with built-in sensor PT 100 and LyoBus-Modul
Weight	
Remark	Max. vessel height 140 mm; only usable with 120755, for LSCplus controller



Adapter / distance ring

Order number 120755

Diameter	300 mm
Material	PET



Fan

Order number 120862

Diameter	200 mm
Function	For circulation of cold air
Weight	
Remark	For LSCplus controller; integrated into 120860, 120861 and 120761



Support frame

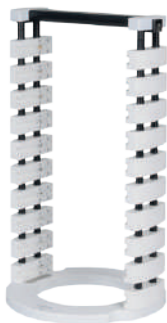
Order number 121945

Function	To hold max. 5 shelves Ø 200 mm
Use	Inside the ice condenser chamber
Height approx.	295 mm
Weight	2 kg
Remark	Suitable for Gamma and Delta with LSCplus controller

Variations

Shelf arrangement	Clearance between shelves (mm)	Usable shelf area (cm²)
1	208	314
1+5	138+32	628
1+4	130+76	628
1, 3+5	2x 69+32	942
1 to 5	4x 25+32	1570

Shelves for single-chamber method ("inside") for LSCplus controller



Support frame

Order number

121960

Function	To hold max. 10 shelves Ø 200 mm
Use	Inside the ice condenser chamber
Height approx.	514 mm
Weight	3.3 kg
Remark	Suitable for Delta with LSCplus controller

Variations

Shelf arrangement	Clearance between shelves (mm)	Usable shelf area (cm²)
1	428	314
1 + 10	377 + 32	628
1 + 9	330 + 76	628
1 + 8	289 + 120	628
1 + 7	245 + 164	628
1 + 6	201 + 208	628
1, 5 + 9	2x 157 + 76	942
1 + 4 + 7 + 10	3x 113 + 32	1256
1 + 3 + 5 + 7 + 9	4x 69 + 76	1570
1 to 10	9x 25 + 32	3140



Shelf

Order number

122576

Diameter	200 mm
Material	Aluminium, black anodised
Temperature control system	Electrical heating with built-in sensor PT 100 and LyoBus-Modul
Weight approx.	2.3 kg
Control	For LSCplus controller

Shelves for double-chamber method ("outside") for LSCplus controller



Base plate

Order number

120880

Diameter	300 mm
Function	The base plate is necessary when shelves are used
Control	For LSCplus controller



Adapter flange

Order number

120881

Diameter	457 mm
Function	For mounting drying chamber Ø 457 mm
Remark	Only for Alpha and Beta with LSCplus controller

Shelves for double-chamber method ("outside") for LSCplus controller



Support frame

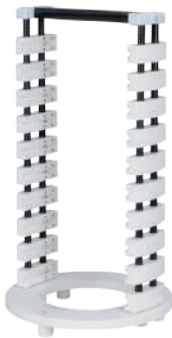
Order number

121145

Function	To hold max. 5 shelves Ø 200 mm
Use	Outside of ice condenser chamber
Height approx.	295 mm
Weight	2 kg
Control	For LSCplus controller

Variations

Shelf arrangement	Clearance between shelves (mm)	Usable shelf area (cm²)
1	208	314
1 + 5	138 + 32	628
1 + 4	130 + 76	628
1 + 3 + 5	4x 69 + 32	942
1 to 5	4x 25 + 32	1570



Support frame

Order number

121160

Function	To hold max. 10 shelves Ø 200 mm
Use	Outside of ice condenser chamber
Height approx.	514 mm
Weight	3.3 kg
Control	For LSCplus controller

Variations

Shelf arrangement	Clearance between shelves (mm)	Usable shelf area (cm²)
1	428	314
1 + 10	377 + 32	628
1 + 9	330 + 76	628
1 + 8	289 + 120	628
1 + 7	245 + 164	628
1 + 6	201 + 208	628
1 + 5 + 9	2x 157 + 76	942
1 + 4 + 7 + 10	3x 113 + 32	1256
1 + 3 + 5 + 7 + 9	4x 69 + 76	1570
1 to 10	9x 25 + 32	3140



Shelf

Order number

122576

Diameter	200 mm
Material	Aluminium, black anodised
Temperature control system	Electrical heating with built-in sensor PT 100 and LyoBus-Modul
Weight approx.	2.3 kg
Control	For LSCplus controller

Shelves for double-chamber method ("outside") for LSCplus controller



Intermediate valve

Order number 122032

Diameter	300 mm
Control	For LSCplus controller
Remark	Base plate 120880 is necessary



LyoCube Base frame

Order number 122557

Dimensions	424 x 334 x 360 mm (H x W x D)
Material	Stainless steel
Weight	Approx. 3 kg
Control	For LSCplus controller



Shelf

Order number 122561

Dimensions	256 x 300 mm
Material	Aluminium, black anodised
Temperature control system	Electrical heating with built-in sensor PT 100 and LyoBus-Modul
Weight approx.	Approx. 2.5 kg
Control	For LSCplus controller



Plate frame with 3 shelves, 86 mm between shelves

Order number 122872

Plate frame with 5 shelves, 67 mm between shelves

Order number 122857

Plate frame with 8 shelves, 48 mm between shelves

Order number 122826

Diameter	375 mm
Material	Aluminium, black anodised
Temperature control system	Electrical heating with built-in sensor PT 100 and LyoBus-Modul
Control	For LSCplus controller



Base plate

Order number 120890

Diameter	240 mm
Features	The accessory base plate is necessary when shelves are used
Remark	Only for Alpha 1-2LDplus

Adapter flange

Order number 120901

Function	For mounting drying chamber Ø 457
Features	For Alpha 1/2-4 LSCbasic and Beta 1-8/2-8 LSCbasic



Drip tray for manifold

Order number 121350

Diameter	500 mm
Function	For protection of the freeze dryer; collects the condensation water dripping from the drying vessels
Remark	Alpha to Gamma, for manifolds 121208, 110538 and 121280

Drip tray for drying chamber

Order number 121355

Diameter	575 mm
Inside diameter	260 mm
Function	For protection of the freeze dryer; collects the condensation water dripping from the drying vessels
Remark	For Alpha 1–2 LDplus



Drip tray

Order number 121360

Diameter	650 mm
Function	For protection of the freeze dryer; collects the condensation water dripping from the drying vessels
Weight approx.	2 kg
Remark	Suitable for drying chamber Ø 300 mm

Drip tray

Order number 121365

Function	For protection of the freeze dryer; collects the condensation water dripping from the drying vessels
Remark	Suitable for drying chamber Ø 457 mm, outside 800 mm

Glass lid

Order number 121398

Diameter	240 mm
Features	With central DIN female ground joint NS45/40 and stopper NS45/40
Remark	Only for Alpha 1–2LDplus



Acrylic lid

Order number 121404

Diameter	300 mm
Weight approx.	3.1 kg
Features	With central DIN female ground joint NS45/40 and stopper NS45/40
Thickness	40 mm

Safety glass lid

Order number 121411

Diameter	300 mm
Features	Solvent resistant, with central stainless steel DIN female ground joint NS45/40 and stopper
Thickness	19 mm

3.4 Drying manifolds

Drying manifolds

Vertical manifold		Order number	110538
Material	Stainless steel with DIN male ground joint NS 45/40		
Width	372 mm		
Height	1030 mm		
Function	For connection to acrylic or glass lid with female ground joint and 12 rubber valves, for substances containing solvents		
Connections	For connecting vessels with DIN female ground joint NS 29/32: 12x 100 ml, 12x 250 ml, 12x 1000 ml, 12x 2000 ml round-bottom flasks, 12x 75 ml, 12x 150 ml, 12x 300 ml, 12x 600 ml, 12x 1200 ml, 8x 2000 ml wide-neck filter bottles		
Features	The connections can be shut off individually and the drying vessels can be vented individually		
Remark	Three levels with four connections each; Alpha 1-2 LDplus, Alpha 1/2-4, Beta 1/2-8, Gamma 1/2-16 and Delta 1/2-24		



Vertical manifold		Order number	121224
Material	Stainless steel with DIN male ground joint NS 45/40		
Width	650 mm		
Height	1170 mm		
Weight approx.	18 kg		
Function	With flange-mounted glass lid Ø 300 mm and 24 rubber valves, for aqueous solutions		
Connections	For connecting vessels with DIN female ground joint NS 29/32: 24x 100 ml, 24x 250 ml, 24x 500 ml, 24x 1000 ml, 16x 2000 ml round-bottom flasks, 24x 75 ml, 24x 150 ml, 24x 300 ml, 24x 600 ml, 24x 1200 ml, 8x 2000 ml wide-neck filter bottles		
Features	The connections can be shut off individually and the drying vessels can be vented individually		
Remark	Three levels with eight connections each; Alpha 1/2-4, Beta 1/2-8, Gamma 1/2-16 and Delta 1/2-24		



Vertical manifold		Order number	121226
Material	Stainless steel with DIN male ground joint NS 45/40		
Width	380 mm		
Height	755 mm		
Function	For connection to acrylic or glass lid with female ground joint and 8 rubber valves, for substances containing solvents		
Connections	For connecting vessels with DIN female ground joint NS 29/32: 8x 100 ml, 8x 250 ml, 8x 500 ml, 8x 1000 ml, 4x 2000 ml round-bottom flasks, 8x 75 ml, 8x 150 ml, 8x 300 ml, 8x 600 ml, 8x 1200 ml, 4x 2000 ml wide-neck filter bottles		
Features	The connections can be shut off individually and the drying vessels can be vented individually		
Remark	Two levels with four connections each; Alpha 1-2 LDplus, Alpha 1/2-4, Beta 1/2-8, Gamma 1/2-16, Delta 1/2-24 and Epsilon 2-6D LSC/LSCplus		

Drying manifolds



Vertical manifold

Order number

112237

Material	Stainless steel with DIN male ground joint NS 45/40
Width	650 mm
Height	946 mm
Function	With flange-mounted glass lid Ø 300 mm and 24 rubber valves, for substances containing solvents
Features	With DIN10KF connector for hot water defrosting
Connections	For connecting vessels with DIN female ground joint NS 29/32: 24x 100 ml, 24x 250 ml, 24x 500 ml, 24x 1000 ml, 8x 2000 ml round-bottom flasks, 24x 75 ml, 24x 150 ml, 24x 300 ml, 24x 600 ml, 16x 1200 ml, 8x 2000 ml wide-neck filter bottles
Features	The connections can be shut off individually and the drying vessels can be vented individually
Remark	Three levels with eight connections each; Alpha 1/2–4, Beta 1/2–8, Gamma 1/2–16 and Delta 1/2–24



Vertical manifold

Order number

112306

Material	Stainless steel
Width	650 mm
Height	903 mm
Function	With flange-mounted glass lid Ø 300 mm and 16 rubber valves, for substances containing solvents
Features	With DN 10 KF connector for hot water defrosting
Connections	For connecting vessels with DIN female ground joint NS 29/32: 16x 100 ml, 16x 250 ml, 16x 500 ml, 16x 1000 ml, 16x 2000 ml round-bottom flasks, 16x 75 ml, 16x 150 ml, 16x 300 ml, 16x 600 ml, 16x 1200 ml, 8x 2000 ml wide-neck filter bottles
Features	The connections can be shut off individually and the drying vessels can be vented individually
Remark	Two levels with eight connections each; Alpha 1/2–4, Beta 1/2–8, Gamma 1/2–16 and Delta 1/2–24

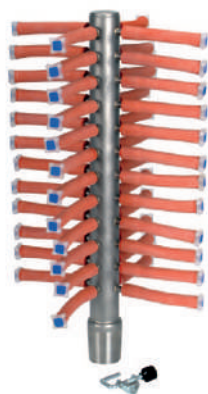
Vertical manifold

Order number

112393

Material	Stainless steel
Width	650 mm
Height	1129 mm
Function	With flange-mounted glass lid Ø 300 mm and 16 rubber valves, for substances containing solvents
Features	With DN 10 KF connector for hot water defrosting
Connections	For connecting vessels with DIN female ground joint NS 29/32: 16x 100 ml, 16x 250 ml, 16x 500 ml, 16x 1000 ml, 16x 2000 ml round-bottom flasks, 16x 75 ml, 16x 150 ml, 16x 300 ml, 16x 600 ml, 16x 1200 ml, 16x 2000 ml wide-neck filter bottles
Features	The connections can be shut off individually and the drying vessels can be vented individually
Remark	Two levels with eight connections each; Alpha 1/2–4, Beta 1/2–8, Gamma 1/2–16 and Delta 1/2–24

Drying manifolds



Vertical manifold

Order number

121280

Material	Stainless steel with DIN male ground joint NS 45/40
Width	108 mm
Height	450 mm
Weight	3 kg
Function	For connection to acrylic or glass lid with female ground joint and 48 hoses, for aqueous solutions, for connecting vials
Features	The connections can be shut off individually and the drying vessels can be vented individually
Remark	Alpha 1-2 LDplus, Alpha 1/2-4, Beta 1/2-8, Gamma 1/2-16 and Delta 1/2-24

Vertical manifold

Order number

110280

Material	Stainless steel with DIN male ground joint NS 45/40
Width	108 mm
Height	545 mm
Function	For connection to acrylic or glass lid with female ground joint and 60 hoses, for connection of ampoules
Features	The connections can be shut off individually and the drying vessels can be vented individually
Remark	Alpha 1/2-4, Beta 1/2-8, Gamma 1/2-16 and Delta 1/2-24
Note	separate connection set necessary



Vertical manifold

Order number

112322

Material	Stainless steel with DIN KF 40 connection
Width	520 mm
Height	770 mm
Weight	Approx. 10 kg
Function	For connection to acrylic or glass lid and 96 hoses, for aqueous solutions, for connection of ampoules
Features	The connections can be shut off individually and the drying vessels can be vented individually
Remark	Alpha 1/2-4, Beta 1/2-8, Gamma 1/2-16 and Delta 1/2-2
Note	separate connection set necessary

Overview

Vertical manifolds

Item number	Connections	Solvent	Water	Mounting	Width (mm)	Height (mm)	Weight (kg)	Connections ₁	Systems
121226	8	Yes	Yes	Ground joint stubs	380	755	4	4x2000 ml round-bottom flasks and wide-neck bottles	Alpha-Epsilon
110538	12	Yes	Yes	Ground joint stubs	372	1030		8x2000 ml wide-neck bottles	Beta-Delta
112306	16	Yes	Yes	Glass lid Ø 300 mm	650	903		8x2000 ml wide-neck bottles	Alpha-Delta
121224	24		Yes	Acrylic lid Ø 300 mm	650	1170	18	16x2000 ml round-bottom flasks and 8x wide-neck bottles	Alpha-Delta
112237	24	Yes	Yes	Glass lid Ø 300 mm	650	946		8x2000 ml round-bottom flasks and wide-neck bottles and 16 x 1200 ml wide-neck filter bottles	Alpha-Delta
121280	48		Yes	Ground joint stubs	108	540	3	Ampoules	Alpha-Delta
110280	60	Yes	Yes	Ground joint stubs	108	545		Ampoules	Alpha-Delta
112322	96		Yes	Connection over KF40	520	770	10	Ampoules	Alpha-Delta

with individually closable rubber valves for connection of round-bottom flasks and wide-neck bottles with DIN female ground joint NS 29/32

¹ The maximum number of large-volume vessels

Horizontal manifold (T shape)

Order number 110005

Material	Stainless steel
Width	1070 mm
Height	550 mm
Weight approx.	6 kg
Function	With flange-mounted acrylic glass lid Ø 300 mm and 16 rubber valves, for aqueous solutions
Connections	For connecting vessels with DIN female ground joint NS29/32: 16x100 ml, 16x250 ml, 16x500 ml, 8x1000 ml, 8x2000 ml round-bottom flasks 16x75 ml, 16x150 ml, 16x300 ml, 16x600 ml, 16x1200 ml, 16x2000 ml wide-neck filter bottles
Features	The connections can be shut off individually and the drying vessels can be vented individually
Remark	Alpha 1/2–4, Beta 1/2–8, Gamma 1/2–16 and Delta 1/2–24



Horizontal manifold (T shape)

Order number 121290

Material	Stainless steel with DIN male ground joint NS45/40
Width	687 mm
Height	320 mm
Weight approx.	5.7 kg
Function	For connection to acrylic or glass lid with female ground joint and 20 rubber valves, for aqueous solutions
Features	The connections can be shut off individually and the drying vessels can be vented individually
Remark	Alpha 1–2 LDplus, Alpha 1/2–4, Beta 1/2–8, Gamma 1/2–16 and Delta 1/2–24

Drying manifolds

Horizontal manifold (T shape)

Order number

110367

Material	Stainless steel with DIN male ground joint NS 45/40
Width	301 mm
Height	611 mm
Function	For connection to acrylic or glass lid with female ground joint and 40 hoses, for connection of ampoules
Features	The connections can be shut off individually and the drying vessels can be vented individually
Remark	Alpha 1–2 LDplus, Alpha 1/2–4, Beta 1/2–8, Gamma 1/2–16 and Delta 1/2–24

Overview

Horizontal manifolds

Item number	Connections	Solvent	Water	Mounting	Width (mm)	Height (mm)	Weight (kg)	Connections	Systems
110005	16		Yes	Acrylic lid Ø 300 mm	1070	550	6	8x 1000 ml round-bottom flasks, 8x 2000 ml round-bottom flasks	Alpha-Delta
121290	20		Yes	Ground joint stubs	687	320	5.7		Alpha-Delta
110367	40	Yes	Yes	Ground joint stubs	301	611		Ampoules	Alpha-Delta

With individually closable rubber valves for connection of round-bottom flasks and wide-neck bottles with DIN female ground joint NS 29/32

† The maximum number of large-volume vessels



Distributor for ampoules

Order number

121870

Connections

15



Ball tap with small flange DN 10KF and accessories

Order number

112271

Function

For hot water defrosting

4.1 Product dishes

Product dishes



Product dish		Order number	127000
Material	Stainless steel		
Diameter	65 mm		
Rim height	20 mm		

Product dish		Order number	127010
Material	Stainless steel		
Diameter	75 mm		
Rim height	20 mm		



Product dish		Order number	127073
Material	Stainless steel		
Diameter	200 mm		
Rim height	18 mm		

Product dish		Order number	127113
Material	Stainless steel		
Diameter	360 mm		
Rim height	32 mm		



Product dish		Order number	127170
Material	Stainless steel, acrylic rim		
Diameter	340 mm		
Rim height	35 mm		
Features	With removable bottom		



Product dish, Teflon coated		Order number	127001
Material	Teflon-coated stainless steel		
Diameter	65 mm		
Rim height	20 mm		

Product dish, Teflon coated		Order number	127011
Material	Teflon-coated stainless steel		
Diameter	75 mm		
Rim height	20 mm		



Product dish, Teflon coated

Order number 127071

Material	Teflon-coated stainless steel
Diameter	200 mm
Rim height	18 mm

Product dish, Teflon coated

Order number 127111

Material	Teflon-coated stainless steel
Diameter	360 mm
Rim height	32 mm

Aluminium product dishes



Product dish

Order number 127126

Material	Aluminium
Diameter	63 mm
Rim height	20 mm

Product dish

Order number 127127

Material	Aluminium
Diameter	140 mm
Rim height	18 mm



Product dish

Order number 127128

Material	Aluminium
Diameter	200 mm
Rim height	18 mm

Product dish

Order number 127130

Material	Aluminium
Diameter	360 mm
Rim height	32 mm

Product sieves



Product sieve	Order number	127075
Diameter	200 mm	
Mesh size	0.2 mm	

Product sieve	Order number	127076
Diameter	200 mm	
Mesh size	0.25 mm	

Product sieve	Order number	127115
Diameter	360 mm	
Mesh size	0.2 mm	

Product sieve	Order number	127117
Diameter	360 mm	
Mesh size	0.25 mm	

4.3 Thermoblocks, split

Aluminium thermoblocks for sealing device, Ø 195 mm

Thermoblock	Order number	110069
Material	Aluminium	
Surface	Black anodised	
Diameter	195 mm	
Height	37 mm	
Form	Two-piece	
Function	For holding a total of 100 vessels Ø 10.2–10.8 x 42–49 mm with round bottom	

Thermoblock	Order number	112288
Material	Aluminium	
Surface	Black anodised	
Diameter	195 mm	
Height	33 mm	
Form	Two-piece	
Function	For holding a total of 72 vessels Ø 14–14.8 x 34–40 mm with flat bottom	



Thermoblock	Order number	112302
Material	Aluminium	
Surface	Black anodised	
Diameter	195 mm	
Height	30 mm	
Form	Two-piece	
Function	For holding a total of 92 vessels Ø 12–12.8 x 33–38 mm with flat bottom	

Aluminium thermoblocks for sealing device, Ø 195 mm

Thermoblock		Order number	112339
Material	Aluminium		
Surface	Black anodised		
Diameter	195 mm		
Height	30 mm		
Form	Two-piece		
Function	For holding a total of 70 vessels Ø 16 x 35 mm (2R vials)		
Remark	Usable in Alpha 1-2 LDplus		

Thermoblock		Order number	112487
Material	Aluminium		
Surface	Black anodised		
Diameter	195 mm		
Height	41 mm		
Form	Two-piece		
Function	For holding a total of 34 vessels Ø 21.5–22.6 x 44–51 mm (6R/8R vials)		

Thermoblock		Order number	112243
Material	Aluminium		
Surface	Black anodised		
Diameter	195 mm		
Height	45 mm		
Form	Two-piece		
Function	For holding a total of 14 vessels Ø 27.5 x 57 mm with flat bottom		

Thermoblock for shelves inside ice condenser chamber (120761)



Thermoblock

Order number

113318

Material	Aluminium
Surface	Black anodised
Diameter	195 mm
Height	70 mm
Form	Two-piece
Function	For a total of 24 vessels Ø 27.8–29.2 x 77–90 mm (50 ml flask) Only in combination with distance ring 120755

Thermoblock for sealing device Ø 240 mm

Thermoblock

Order number

110200

Material	Aluminium
Surface	Black anodised
Diameter	240 mm
Height	20 mm
Form	Two-piece
Function	For holding a total of 136 vessels Ø 12 x 30 mm



Thermoblock

Order number

110159

Material	Aluminium
Surface	Black anodised
Diameter	240 mm
Height	30 mm
Form	Two-piece
Function	For holding a total of 94 vessels Ø 15.4–16.3 x 31–36 mm (2R vials)

Thermoblock

Order number

110064

Material	Aluminium
Surface	Black anodised
Diameter	240 mm
Height	30 mm
Form	Two-piece
Function	For holding a total of 48 vessels Ø 23–24.2 x 35–41 mm with flat bottom

Thermoblock

Order number

112240

Material	Aluminium
Surface	Black anodised
Diameter	240 mm
Height	36 mm
Form	Two-piece
Function	For holding a total of 48 vessels Ø 23–24.2 x 41–48 mm (10R vials)

Thermoblock for sealing device Ø 240 mm

Thermoblock	Order number	112370
Material	Aluminium	
Surface	Black anodised	
Diameter	240 mm	
Height	36 mm	
Form	Two-piece	
Function	For holding a total of 198 vessels Ø 10.5–11.1 x 41–48 mm with flat bottom	

Thermoblock	Order number	112402
Material	Aluminium	
Surface	Black anodised	
Diameter	240 mm	
Height	41 mm	
Form	Two-piece	
Function	For holding a total of 56 vessels Ø 21.4–22.5 x 44–51 mm (6R/8R vials)	

Thermoblock	Order number	112449
Material	Aluminium	
Surface	Black anodised	
Diameter	240 mm	
Height	43 mm	
Form	Two-piece	
Function	For holding a total of 32 vessels Ø 28.6–30.1 x 50–59 mm (20R vials)	

Overview

Aluminium thermoblocks

Item number	Block diameter (mm)	Number of vials	Vial diameter (mm)	Comments
110069	195	100	10.2–10.8 x 42–48	with round bottom
112302	195	92	12–12.8 x 33–38	with flat bottom
112339	195	70	16 x 35	2R vials
112487	195	34	21.5–22.6 x 44–51	6R/8R vials
112243	195	14	27.5 x 57	with flat bottom
113318	195	24	27.8–29.2 x 77–90	50 ml flask
110200	240	136	12 x 30	
110159	240	94	15.4–16.3 x 31–36	2R vials
110064	240	48	23–24.2 x 35–41	with flat bottom
112240	240	48	23–24.2 x 41–48	10R vials
112370	240	198	10.5–11.1 x 41–48	with flat bottom
112402	240	56	21.4–22.5 x 44–51	6R/8R vials
112449	240	32	28.6–30.1 x 50–59	20R vials

4.4 Thermoblocks, not split

Aluminium thermoblocks Ø 195 mm

Thermoblock		Order number	110319
Material	Aluminium		
Surface	Black anodised		
Diameter	195 mm		
Height	30 mm		
Function	For holding a total of 70 vessels Ø 11.1–11.8 x 30–35 mm or 27 vessels Ø 19.7–20.7 x 37–43		

Thermoblock		Order number	110007
Material	Aluminium		
Surface	Black anodised		
Diameter	195 mm		
Height	30 mm		
Function	For holding a total of 79 vessels Ø 15.4–16.3 x 31–36 mm with flat bottom		

Thermoblock		Order number	110053
Material	Aluminium		
Surface	Black anodised		
Diameter	195 mm		
Height	30 mm		
Function	For holding a total of 118 vessels Ø 7.9–8.3 x 33–38 mm with round bottom		

Thermoblock		Order number	110183
Material	Aluminium		
Surface	Black anodised		
Diameter	195 mm		
Height	33 mm		
Function	For holding a total of 50 vessels Ø 12.1–12.8 x 33–38 mm with round or flat bottom or 50 vessels Ø 10.2–10.8 x 36–42 mm with flat or round bottom		

Thermoblock		Order number	127213
Material	Aluminium		
Surface	Black anodised		
Diameter	195 mm		
Height	30 mm		
Function	For holding a total of 104 vessels Ø 12.1–12.8 x 33–38 mm with flat or round bottom		

Aluminium thermoblocks Ø 195 mm



Thermoblock		Order number	127215
Material	Aluminium		
Surface	Black anodised		
Diameter	195 mm		
Height	30 mm		
Function	For holding a total of 86 vessels Ø 14–14.8 x 33–38 mm		

Thermoblock		Order number	112218
Material	Aluminium		
Surface	Black anodised		
Diameter	195 mm		
Height	30 mm		
Function	For holding a total of 44 vessels Ø 19.7–20.7 x 35–41 mm with flat bottom		

Thermoblock		Order number	112455
Material	Aluminium		
Surface	Black anodised		
Diameter	195 mm		
Height	70 mm		
Function	For holding a total of 22 vessels Ø 27.8–29.2 x 36.5–43 mm (designed for flasks or Eppendorf) or 21 vessels Ø 9.9–10.5 x 48–56 mm or 22 vessels Ø 14.9–15.8 x 50.5–59 mm		

Thermoblock		Order number	112448
Material	Aluminium		
Surface	Black anodised		
Diameter	195 mm		
Height	31 mm		
Function	For holding a total of 69 vessels Ø 16.5–17.5 x 36–42 mm		

Thermoblock		Order number	112225
Material	Aluminium		
Surface	Black anodised		
Diameter	195 mm		
Height	32 mm		
Function	For holding a total of 50 vessels Ø 18.1–19.2 x 36–42 mm with flat bottom		

Thermoblock		Order number	112461
Material	Aluminium		
Surface	Black anodised		
Diameter	195 mm		
Height	40 mm		
Function	For holding a total of 16 strips with 8 tubes per strip		

Aluminium thermoblocks Ø 195 mm

Thermoblock		Order number	112367
Material	Aluminium		
Surface	Black anodised		
Diameter	195 mm		
Height	35 mm		
Function	For holding a total of 85 vessels Ø 15.1–16 x 40–47 mm with flat bottom		

Thermoblock		Order number	110006
Material	Aluminium		
Surface	Black anodised		
Diameter	195 mm		
Height	50 mm		
Function	For holding a total of 43 vessels Ø 21.1–22.2 x 43–50 mm		

Thermoblock		Order number	110011
Material	Aluminium		
Surface	Black anodised		
Diameter	195 mm		
Height	50 mm		
Function	For holding a total of 44 vessels Ø 14–14.8 x 41–48 mm (injection vials with crimp seal Ø 23 mm)		

Thermoblock		Order number	112354
Material	Aluminium		
Surface	Black anodised		
Diameter	195 mm		
Height	38 mm		
Function	For holding a total of 140 vessels Ø 9.8–10.4 x 43–50 mm		

Thermoblock		Order number	110282
Material	Aluminium		
Surface	Black anodised		
Diameter	195 mm		
Height	40 mm		
Function	For holding a total of 93 vessels Ø 13.5–14.3 x 43–50 mm with flat bottom		

Thermoblock		Order number	112223
Material	Aluminium		
Surface	Black anodised		
Diameter	195 mm		
Height	45 mm		
Function	For holding a total of 37 vessels Ø 23.5–24.7 x 48–56 mm with flat bottom		

Aluminium thermoblocks Ø 195 mm

Thermoblock		Order number	112363
Material	Aluminium		
Surface	Black anodised		
Diameter	195 mm		
Height	41.5 mm		
Function	For holding a total of 36 vessels Ø 24.2–25.4 x 48.5–57 mm (10H vials)		

Thermoblock		Order number	113307
Material	Aluminium		
Surface	Black anodised		
Diameter	195 mm		
Height	45 mm		
Function	For holding a total of 52 vessels Ø 10.2–10.8 x 48–56 mm (Eppendorf caps)		
Remark	two pieces not usable for sealing device		

Thermoblock		Order number	113345
Material	Aluminium		
Surface	Black anodised		
Diameter	195 mm		
Height	44 mm		
Function	For holding a total of 36 vessels Ø 22.8–24 x 51–60 mm (10R / 15R vials)		

Thermoblock		Order number	112364
Material	Aluminium		
Surface	Black anodised		
Diameter	195 mm		
Height	46 mm		
Function	For holding a total of 23 vessels Ø 30.4–32 x 53–62 mm (20H vials)		

Thermoblock		Order number	113344
Material	Aluminium		
Surface	Black anodised		
Diameter	195 mm		
Height	55 mm		
Function	For holding a total of 36 vessels Ø 28.5–30 x 63–74 mm (30R vials)		

Thermoblock		Order number	110161
Material	Aluminium		
Surface	Black anodised		
Diameter	195 mm		
Height	58 mm		
Function	For holding a total of 86 vessels Ø 14.4–15.3 x 62–73 mm with round bottom (ampoules)		

Aluminium thermoblocks Ø 195 mm

Thermoblock		Order number	110010
Material	Aluminium		
Surface	Black anodised		
Diameter	195 mm		
Height	60 mm		
Function	For holding a total of 79 vessels Ø 15.4–16.3 x 63–74 mm with round bottom		

Thermoblock		Order number	110050
Material	Aluminium		
Surface	Black anodised		
Diameter	195 mm		
Height	70 mm		
Function	For holding a total of 20 vessels Ø 32.1–33.7 x 65–75 mm with round bottom		

Thermoblock		Order number	110530
Material	Aluminium		
Surface	Black anodised		
Diameter	195 mm		
Height	60 mm		
Function	For holding a total of 100 vessels Ø 11.1–11.8 x 63–74 mm with round bottom		

Thermoblock		Order number	112246
Material	Aluminium		
Surface	Black anodised		
Diameter	195 mm		
Height	60 mm		
Function	For holding a total of 91 vessels Ø 16.8–17.8 x 63–74 mm with flat bottom		

Thermoblock		Order number	110182
Material	Aluminium		
Surface	Black anodised		
Diameter	195 mm		
Height	70 mm		
Function	For holding a total of 22 vessels Ø 27.8–29.2 x 68–80 mm or 22 vessels Ø 15.8–16.8 x 70–82 mm		

Thermoblock		Order number	112365
Material	Aluminium		
Surface	Black anodised		
Diameter	195 mm		
Height	61 mm		
Function	For holding a total of 13 vessels Ø 40.4–42.5 x 68–80 mm (50H vials)		

Aluminium thermoblocks Ø 195 mm

Thermoblock		Order number	112366
Material	Aluminium		
Surface	Black anodised		
Diameter	195 mm		
Height	43 mm		
Function	For holding a total of 7 vessels Ø 49.6–51.6 x 77.5–91 mm (100H vials)		

Thermoblock		Order number	112317
Material	Aluminium		
Surface	Black anodised		
Diameter	195 mm		
Height	85 mm		
Function	For holding a total of 124 vessels Ø 6.9–7.3 x 80–94 mm or 124 vessels Ø 6.9–7.3 x 88–103 mm		

Thermoblock		Order number	110193
Material	Aluminium		
Surface	Black anodised		
Diameter	195 mm		
Height	85 mm		
Function	For holding a total of 37 vessels Ø 23–25.1 x 84–99 mm with round bottom		

Thermoblock		Order number	110023
Material	Aluminium		
Surface	Black anodised		
Diameter	195 mm		
Height	80 mm		
Function	For holding a total of 190 vessels Ø 7.9–8.3 x 83–97 mm with round bottom		

Thermoblock		Order number	112224
Material	Aluminium		
Surface	Black anodised		
Diameter	195 mm		
Height	85 mm		
Function	For holding a total of 37 vessels Ø 23.9–25.1 x 90–106 mm with flat bottom		

Thermoblock		Order number	110311
Material	Aluminium		
Surface	Black anodised		
Diameter	195 mm		
Height	100 mm		
Function	For holding a total of 37 vessels Ø 23.5–24.7 x 99–116 mm with flat bottom		

Thermoblock. not split Ø 195 mm, stackable

Thermoblock

Order number

127227

Material	Aluminium
Surface	Black anodised
Diameter	195 mm
Height	30 mm
Function	For holding a total of 354 vessels Ø 10.2–10.8 x 33–38 mm (Eppendorf caps)
Remark	Total height of three stacked blocks = 200 mm Space between thermoblocks 55 mm



Thermoblock

Order number

112316

Material	Aluminium
Surface	Black anodised
Diameter	195 mm
Height	45 mm
Function	For holding a total of 58 vessels Ø 10.2–10.8 x 33–38 mm (Eppendorf caps)
Remark	Max. stacking height 4 blocks; spacers required (item no. 112315) Space between thermoblocks 30 mm

Thermoblock

Order number

112346

Material	Aluminium
Surface	Black anodised
Diameter	195 mm
Height	70 mm
Function	For holding a total of 72 vessels Ø 15.8–16.8 x 70–82 mm (15 ml Falcon tube); spacers required (item no. 113316)



Thermoblock

Order number

110281

Material	Aluminium
Surface	Black anodised
Diameter	195 mm
Height	70 mm
Function	For holding a total of 27 vessels Ø 27.8–29.2 x 77–90 mm (50 ml Falcon tube); spacers required (item no. 113316)

Thermoblock. not split Ø 360 mm

Thermoblock

Order number

110057

Material	Aluminium
Surface	Black anodised
Diameter	356 mm
Height	150 mm
Function	For holding a total of 12 vessels Ø 76.8–80 x 155–182 mm

Thermoblock	Order number	110055
Material	Aluminium	
Surface	Black anodised	
Diameter	366 mm	
Height	220 mm	
Function	For holding a total of 6 vessels Ø 104.2–108.5 x 227–267 mm	

Overview

Aluminium thermoblocks

Item number	Block diameter (mm)	Number of vials	Vial diameter (mm)	Comments
110319	195	70 / 27	11.1–11.8 x 30–35 19.7–20.7 x 37–43	
110007	195	79	15.4–16.3 x 31–36	with flat bottom
110053	195	118	7.9–8.3 x 33–38 12.1–12.8 x 33–38	with round bottom
110183	195	50	10.2–10.8 x 36–42	Eppendorf caps
127213	195	104	12.1–12.8 x 33–38	Round or flat bottom
127215	195	86	14–14.8 x 33–38	with flat bottom
112218	195	44	19.7–20.7 x 35–41	with flat bottom
112455	195	22/21	27.8–29.2 x 36.5–43 9.9–10.5 x 48–56	
112448	195	69	16.5–17.5 x 36–42	
112225	195	50	18.1–19.2 x 36–42	with flat bottom
112461	195	16	Tube strips	
112367	195	85	15.1–16 x 40–47	with flat bottom
110006	195	43	21.1–22.2 x 43–50	
110011	195	44	14–14.8 x 41–48	Injection vials
112354	195	140	9.8–10.4 x 43–50	with flat bottom
110282	195	93	13.5–4.3 x 43–50	with flat bottom
112223	195	37	23.5–24.7 x 48–56	with flat bottom
112363	195	36	24.2–25.4 x 48.5–57	10H vials
113307	195	52	10.2–10.8 x 48–56	Eppendorf caps/two pieces
113345	195	36	22.8–24 x 51–60	10R/15R vials
112364	195	23	30.4–32 x 53–62	20H vials
113344	195	36	28.5–30 x 63–74	30R vials
110161	195	86	14.4–15.3 x 62–73	Ampoules
110010	195	79	15.4–16.3 x 63–74	with round bottom
110050	195	20	32.1–33.7 x 65–75	with round bottom
110530	195	100	11.1–11.8 x 63–74	with round bottom
112246	195	91	16.8–17.8 x 63–74	with flat bottom
110182	195	22	27.8–29.2 x 68–80	
112365	195	13	40.4–42.5 x 68–80	50H vials
112366	195	7	49.6–51.6 x 77.5–91	100H vials
112317	195	124	6.9–7.3 x 80–94	
110193	195	37	23–25 x 84–99	with round bottom
110023	195	190	7.9–8.3 x 83–97	with round bottom
112224	195	37	23.9–25.1 x 90–106	with flat bottom
110311	195	37	23.5–24.7 x 99–116	with flat bottom

4.5 Rubber valves

Rubber valves



Rubber valve		Order number	121860
Function	For connection to drying chamber or as spare rubber valve for drying manifold		
Features	The rubber valve is equipped with a DIN male ground joint NS29/32 for connection of round-bottom flasks, etc.; 5–100 ml injection vials or wide-neck filter bottles can be connected after removing the rubber ground joint from the valve		
Sterilisation	Fully sterilisable at +121°C		



Rubber valve		Order number	121861
Features	Rubber valve with stainless steel shut-off knob, solvent resistant version		
Function	For connecting vessels with DIN female ground joint 29/32		



Replacement rubber and piece		Order number	121865
Features	For rubber valve, NS29/32		
Sterilisation	Sterilisable at +121°C		



Screw stopper		Order number	121862
Material	Plastic		
Connection	For rubber valve		
Sterilisation	Sterilisable at +121°C		



Shut-off knob		Order number	121863
Material	Stainless steel		
Connection	For rubber valve		
Sterilisation	Sterilisable at +121°C		



Adapter		Order number	121880
Connection	For rubber valve, NS 14.5		



Adapter and filter		Order number	121890
Connection	For rubber valve NS29/32		

4.6 Round-bottom flasks

Round-bottom flasks



Round-bottom flask Order number 127350

Size 100 ml

Round-bottom flask Order number 127355

Size 250 ml

Round-bottom flask Order number 127360

Size 500 ml

Round-bottom flask Order number 127361

Size 500 ml

Features With glass shard protection

Round-bottom flask Order number 127365

Size 1000 ml

Round-bottom flask Order number 127370

Size 2000 ml

4.7 Filter inserts

Filter inserts and spare parts for filter inserts



Filter insert Order number 121891

Features With fine filter for rubber valves



Filter insert Order number 121892

Material Stainless steel

Features With fine filter for rubber valves (solvent resistant)



Filter paper Order number 127444

Diameter 18 mm

Quantity 100

Function For retention filter

4.8 Wide-neck filter bottles

Wide-neck filter bottles



Wide-neck filter bottle		Order number	127400
Size	75 ml		

Wide-neck filter bottle		Order number	127405
Size	150 ml		



Wide-neck filter bottle		Order number	127410
Size	300 ml		
	wide neck filter bottle without cap - item no. 680520		

Wide-neck filter bottle		Order number	127415
Size	600 ml		
	wide neck filter bottle without cap - item no. 680530		

Wide-neck filter bottle		Order number	127420
Size	1200 ml		
	wide neck filter bottle without cap - item no. 680540		

Wide-neck filter bottle		Order number	127425
Size	2000 ml		
	wide neck filter bottle without cap - item no. 680550		

Order number of drying vessels	Nominal capacity (ml)	Dimensions Ø outside (mm)	Dimensions height (mm)	Bottle opening Ø	Content with 1 cm layer	
					Static (ml)	Dynamic (ml) *
127400	75	60	87	49	25	45
127405	150	70	87	49	35	115
127410	300	70	151	49	35	226
127415	600	105	130	77	78	302
127420	1200	105	222	77	78	560
127425	2000	105	352	77	78	945



Spare rubber cap		Order number	127430
Size	For Ø 75 ml to Ø 300 ml		



Spare rubber cap		Order number	127431
Size	For Ø 600 ml to Ø 2000 ml		



Filter paper		Order number	127440
Size	Ø 30 mm		
Quantity	100		
Pore size	70 µm		
Use	For wide-neck filter bottles 75 ml to 300 ml		



Filter paper		Order number	127442
Size	Ø 47 mm		
Quantity	100		
Pore size	70 µm		
Use	For wide-neck filter bottles 600 ml to 2000 ml		

4.9 Protective nets

Protective nets



Protective net		Order number	127380
Vessel Ø	80–120 mm		
Function	For round-bottom flasks and wide-neck filter bottles		
Length	250 mm		



Protective net		Order number	127381
Vessel Ø	100–200 mm		
Function	For round-bottom flasks and wide-neck filter bottles		
Length	250 mm		



Protective net		Order number	127382
Vessel Ø	150–230 mm		
Function	For round-bottom flasks and wide-neck filter bottles		
Length	250 mm		

4.10 Ampoules

Ampoules



Long-neck ampoules		Order number	127502
Capacity	2 ml		
Diameter	12 mm		
Overall length	121 mm		
Neck diameter	8 mm		
Neck length	90 mm		
Quantity	100		

Long-neck ampoules		Order number	127505
Capacity	5 ml		
Diameter	12 mm		
Overall length	156 mm		
Neck diameter	8 mm		
Quantity	100		

Long-neck ampoules		Order number	127510
Capacity	10 ml		
Diameter	16 mm		
Overall length	156 mm		
Neck diameter	8 mm		
Quantity	100		



Ampoule sealing torch		Order number	127695
Remark	For connection to gas and oxygen or to gas, air and oxygen The torch has a special flame stabilisation system, which allows it to be operated with a high air ratio to cool the flame.		

4.11 Single vial sealing device

Screw bottles



Screw bottles		Order number	112488
Remark	For screw bottles compliant with ISO 11418, with round fitting 18 x 3.0		
Function	For connection to rubber valve		

4.12 Injection vials

Injection vials (crimp seal vials), DIN/ISO compliant



Injection vials		Order number	127572
Type	2 R		
Quantity	352		
Injection vials		Order number	127576
Type	6 R		
Quantity	192		
Injection vials		Order number	127580
Type	10 R		
Quantity	160		
Injection vials		Order number	127582
Type	20 R		
Quantity	99		
Injection vials		Order number	127585
Type	50 H		
Quantity	130		
Injection vials		Order number	127590
Type	100 H		
Quantity	88		

* Quantity can vary

Vial type	Maximum capacity (ml)	Diameter (mm)	Height (mm)	Capacity with 1 cm fill level (ml)
2 R	4	16	35	1.4
4 R	6	16	45	1.4
6 R	10	22	40	3.0
8 R	11.5	22	45	3.0
10 R	13.5	24	45	3.7
15 R	19	24	60	3.7
20 R	25	30	55	5.8
25 R	30.5	30	65	5.8
30 R	36	30	75	5.8
5 H	7	20.8	41.3	2.7
7 H	9	22.1	40.8	3.1
8 H	10	23	46.8	3.4
10 H	15	25.4	53.5	4.2
15 H	17	26.5	58.8	4.7
20 H	26	32	58	6.6
25 H	32	36	58	8.5
30 H	38	36	62.8	8.5
50 H	60	42.5	73	11.6
100 H	119	51.6	94.5	17.7



Serrated rubber stopper		Order number	127650
Diameter	13 mm		
Function	For injection vials 2 R		
Quantity	100		

Serrated rubber stopper		Order number	127651
Diameter	20 mm		
Function	For injection vials 6 R–100 H		
Quantity	100		



Crimp caps		Order number	127660
Dimensions	Ø 13 x 6.8 mm		
Function	For injection vials 2 R		
Quantity	100		

Crimp caps		Order number	127661
Dimensions	Ø 20 x 7.5 mm		
Function	For injection vials 6 R–100 H		
Quantity	100		



Hand crimper		Order number	127670
Remark	For 2 R		

Hand crimper		Order number	127671
Remark	For 6 R–100 H		



Decrimper		Order number	127680
Remark	For 2 R		

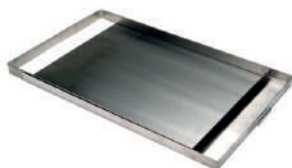
Decrimper		Order number	127681
Remark	For 6 R–100 H		

5 Epsilon Accessories

Product dishes



Product dish		Order number	127280
Material	Stainless steel		
Size (mm)	225 x 300 x 30 (W x D x HD)		
Remark	For Epsilon 2-6 D		



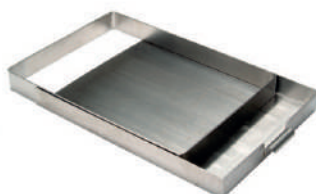
Product frame		Order number	127286
Material	Stainless steel		
Size (mm)	225 x 300 x 30 (W x D x HD)		
Remark	For Epsilon 2-6 D		

Product base sheet		Order number	127285
Material	Stainless steel		
Size (mm)	225 x 300		
Function	For product frame 127286		
Remark	For Epsilon 2-6 D		

Product sieve		Order number	127282
Size (mm)	225 x 300		
Mesh size	0.2 mm		



Product dish		Order number	127230
Material	Stainless steel		
Size (mm)	227 x 400 x 20 (W x D x HD)		
Rim height	20 mm		
Remark	For Epsilon 1-4 / 2-4		



Product frame		Order number	127231
Material	Stainless steel		
Size (mm)	227 x 400 x 20 (W x D x HD)		
Remark	For Epsilon 1-4 / 2-4		

Product base sheet		Order number	127229
Material	Stainless steel		
Size (mm)	227 x 400		
Function	For product frame 127231		
Remark	For Epsilon 1-4 / 2-4		

Product dish		Order number	127230
Material	Stainless steel		
Size (mm)	227 x 400 x 20 (W x D x HD)		
Remark	For Epsilon 1-4 / 2-4		

Product dish		Order number	127290
Material	Stainless steel		
Size (mm)	350 x 450 x 30 (W x D x HD)		
Weight approx.	2.3 kg		
Remark	For Epsilon 2-12 D		

Product dish		Order number	127190
Material	Stainless steel		
Size (mm)	350 x 400 x 30 (W x D x HD)		
Weight approx.	2.3 kg		
Remark	For Epsilon 2-12 D		

Product frame		Order number	127293
Material	Stainless steel		
Size (mm)	350 x 450 x 30 (W x D x HD)		
Weight approx.	1.5 kg		
Remark	For Epsilon 2-12 D		

Product base sheet		Order number	127295
Material	Stainless steel		
Function	For product frame 127293		
Weight approx.	1.8 kg		
Remark	For Epsilon 2-12 D		

Overview

Product dishes

Item number	Size in mm	Nominal volume Layer thickness 1 cm	Device
127230	270 x 400	1080 ml	Epsilon 1-4/2-4 and Epsilon 2-20
127280	225 x 300	675 ml	Epsilon 2-6 D
127260	300 x 400	1200 ml	Epsilon 2-16 D
127190	350 x 400	1400 ml	Epsilon 2-10 D
127290	350 x 450	1575 ml	Epsilon 2-12 D
127300	300 x 300	900 ml	Production systems
127310	300 x 450	1350 ml	Production systems
127320	300 x 600	1800 ml	Production systems

5.2 Sensor

Product sensor



Product sensor Order number 124799

Model PT 100

Cable length approx. 0.8m

Product sensor Order number 124801

Model PT 100

Cable length approx. 2m

Product sensor Order number 124806

Model 2x PT 100



Product sensor Order number 124804

Model PT 100 Mini-Epsilon

5.3 Manifold

Drying manifold



Horizontal drying manifold Order number 121202

Width 575 mm

Height 753 mm

Material Stainless steel

Function With connection to rear wall of system via 2x DN 40 KF-37 and 12 rubber valves, **for substances containing solvents**

Connection For connecting vessels with DIN female ground joint NS29/32:
12x 100 ml, 12x 250 ml, 12x 500 ml, 12x 1000 ml, 8x 2000 ml round-bottom flasks;
12x 75 ml, 12x 150 ml, 12x 300 ml, 12x 600 ml, 12x 1200 ml, 6x 2000 ml wide-mouth filter bottles

Features The connections can be shut off individually and the drying vessels can be vented individually

Remark Epsilon 2-6 D

Vertical manifold Order number 121204

Width 400 mm

Height 524 mm

Material Stainless steel

Function Flange mounted directly on drying chamber, with 4 rubber valves, **for substances containing solvents**

Connection For connecting vessels with DIN female ground joint NS29/32:
4x 100 ml, 4x 250 ml, 4x 500 ml, 4x 1000 ml, 4x 2000 ml round-bottom flasks
4x 75 ml, 4x 150 ml, 4x 300 ml, 4x 600 ml, 4x 1200 ml wide-mouth filter bottles

Features The connections can be shut off individually and the drying vessels can be vented individually

Remark 1 level; only for Epsilon 1/2-4 LSCplus

Drip tray Order number 121345

Size 30 x 138 x 525 mm

Function For drying manifolds

Remark For Epsilon 2-6 D

5.4 Thermoblocks

Thermoblocks for Epsilon

Thermoblock		Order number	112428
Material	Aluminium		
Surface	Black anodised		
Dimensions (mm)	127.8 x 85.8 x 30 (L x W x H)		
Function	For holding a total of 30 vessels Ø 7.6–8 x 35–41 mm with flat bottom or holding a total of 20 vessels Ø 14.2–15.1 x 35–41 mm with flat bottom		

Thermoblock		Order number	110382
Material	Aluminium		
Surface	Black anodised		
Dimensions (mm)	127.8 x 85.8 x 48 (L x W x H)		
Function	For holding a total of 40 vessels Ø 9.6–10.2 x 48.5–57 mm with flat bottom and crimp rim Ø 12.2		

Thermoblock		Order number	112290
Material	Aluminium		
Surface	Black anodised		
Dimensions (mm)	127.8 x 85.7 x 31.5 (L x W x H)		
Function	For holding a total of 40 vessels Ø 10–10.6 x 36.5–43 mm with bail crimp		

Thermoblock		Order number	110534
Material	Aluminium		
Surface	Black anodised		
Dimensions (mm)	127.8 x 85.8 x 43 (L x W x H)		
Function	For holding a total of 30 vessels Ø 10.4–11 x 51–60 mm (Eppendorf caps)		

Thermoblock		Order number	110535
Material	Aluminium		
Surface	Black anodised		
Dimensions (mm)	127.8 x 85.8 x 23 (L x W x H)		
Function	For holding a total of 48 vessels Ø 11–11.6 x 28–33 mm		

Thermoblock		Order number	110356
Material	Aluminium		
Surface	Black anodised		
Dimensions (mm)	127.8 x 85.8 x 72 (L x W x H)		
Function	For holding a total of 48 vessels Ø 11.3–12 x 79.5–93 mm with round bottom		

Thermoblocks for Epsilon

Thermoblock		Order number	113309
Material	Aluminium		
Surface	Black anodised		
Dimensions (mm)	127.8 x 85.8 x 50 (L x W x H)		
Function	For holding a total of 35 vessels Ø 12.1–12.8 x 55–64 mm with flat bottom		

Thermoblock		Order number	110216
Material	Aluminium		
Surface	Black anodised		
Dimensions (mm)	127.8 x 85.7 x 21 (L x W x H)		
Function	For holding a total of 35 vessels Ø 12.6–13.3 x 27–31 mm with flat bottom		

Thermoblock		Order number	110220
Material	Aluminium		
Surface	Black anodised		
Dimensions (mm)	127.8 x 85.8 x 38 (L x W x H)		
Function	For holding a total of 35 vessels Ø 13.8–14.6 x 44–51 mm with flat bottom		

Thermoblock		Order number	110054
Material	Aluminium		
Surface	Black anodised		
Dimensions (mm)	127.8 x 86 x 28 (L x W x H)		
Function	For holding a total of 35 vessels Ø 14–14.8 x 33–38 mm with flat bottom		

Thermoblock		Order number	110275
Material	Aluminium		
Surface	Black anodised		
Dimensions (mm)	127.8 x 85.8 x 45 (L x W x H)		
Function	For holding a total of 12 vessels Ø 14.1–15 x 43–50 mm with flat bottom		

Thermoblock		Order number	110385
Material	Aluminium		
Surface	Black anodised		
Dimensions (mm)	198 x 99 x 35 (L x W x H)		
Function	For holding a total of 50 vessels Ø 15 x 45 mm with round or flat bottom		



Thermoblocks for Epsilon

Thermoblock		Order number	110355
Material	Aluminium		
Surface	Black anodised		
Dimensions (mm)	127.8 x 85.8 x 72 (L x W x H)		
Function	For holding a total of 24 vessels Ø 15.1–16 x 72–84 mm with round bottom		

Thermoblock		Order number	110191
Material	Aluminium		
Surface	Black anodised		
Dimensions (mm)	127.8 x 85.8 x 44 (L x W x H)		
Function	For holding a total of 24 vessels Ø 15.8–16.8 x 44–51 mm with round bottom		

Thermoblock		Order number	110374
Material	Aluminium		
Surface	Black anodised		
Dimensions (mm)	127.8 x 85.8 x 35 (L x W x H)		
Function	For holding a total of 24 vessels Ø 16.1–17.1 x 41.5–48 mm		

Thermoblock		Order number	110300
Material	Aluminium		
Surface	Black anodised		
Dimensions (mm)	127.8 x 85.8 x 72 (L x W x H)		
Function	For holding a total of 24 vessels Ø 16.3–17.3 x 72–84 mm with round bottom		

Thermoblock		Order number	112344
Material	Aluminium		
Surface	Black anodised		
Dimensions (mm)	127.8 x 85.8 x 30 (L x W x H)		
Function	For holding a total of 24 vessels Ø 17.3–18.3 x 36–42 mm with flat bottom		

Thermoblock		Order number	110364
Material	Aluminium		
Surface	Black anodised		
Dimensions (mm)	127.8 x 85.8 x 38 (L x W x H)		
Function	For holding a total of 18 vessels Ø 19.2–20.2 x 46–54 mm with flat bottom		

Thermoblocks for Epsilon

Thermoblock		Order number	110370
Material	Aluminium		
Surface	Black anodised		
Dimensions (mm)	127.8 x 85.7 x 25 (L x W x H)		
Function	For holding a total of 18 vessels Ø 20.2–21.2 x 33–38 mm with flat bottom		

Thermoblock		Order number	110305
Material	Aluminium		
Surface	Black anodised		
Dimensions (mm)	127.8 x 85.8 x 61 (L x W x H)		
Function	For holding a total of 12 vessels Ø 21.9–23 x 68–80 mm with flat bottom		

Thermoblock		Order number	110219
Material	Aluminium		
Surface	Black anodised		
Dimensions (mm)	127.8 x 85.8 x 38 (L x W x H)		
Function	For holding a total of 12 vessels Ø 23.2–24.4 x 45–53 mm with flat bottom		

Thermoblock		Order number	110322
Material	Aluminium		
Surface	Black anodised		
Dimensions (mm)	127.8 x 85.7 x 31.5 (L x W x H)		
Function	For holding a total of 12 vessels Ø 24–25.2 x 33.5–39 mm with flat bottom		

Thermoblock		Order number	110321
Material	Aluminium		
Surface	Black anodised		
Dimensions (mm)	127.8 x 85.7 x 31 (L x W x H)		
Function	For holding a total of 10 vessels Ø 24–25.2 x 38–44 mm with flat bottom		

Thermoblock		Order number	110511
Material	Aluminium		
Surface	Black anodised		
Dimensions (mm)	187.5 x 134.5 x 20 (L x W x H)		
Function	For holding a total of 35 vessels Ø 24 x 45 mm with flat bottom (10R vials)		

Thermoblocks for Epsilon

Thermoblock		Order number	110368
Material	Aluminium		
Surface	Black anodised		
Dimensions (mm)	127.8 x 85.8 x 38 (L x W x H)		
Function	For holding a total of 10 vessels Ø 26.4–27.7 x 45–53 mm with flat bottom		

Thermoblock		Order number	110304
Material	Aluminium		
Surface	Black anodised		
Dimensions (mm)	127.8 x 85.8 x 61 (L x W x H)		
Function	For holding a total of 10 vessels Ø 26.6–28 x 68–80 mm with flat bottom		

Thermoblock		Order number	110301
Material	Aluminium		
Surface	Black anodised		
Dimensions (mm)	127.8 x 93 x 65 (L x W x H)		
Function	For holding a total of 12 vessels Ø 26.2–27.5 x 70–82 mm with flat bottom		

Thermoblock		Order number	110533
Material	Aluminium		
Surface	Black anodised		
Dimensions (mm)	127.8 x 85.8 x 63 (L x W x H)		
Function	For holding a total of 11 vessels Ø 27.5–28.9 x 70–82 mm with flat bottom		

Thermoblock		Order number	110376
Material	Aluminium		
Surface	Black anodised		
Dimensions (mm)	127.8 x 85.8 x 38 (L x W x H)		
Function	For holding a total of 8 vessels Ø 28.7–30.2 x 45–53 mm with flat bottom		

Thermoblock		Order number	110190
Material	Aluminium		
Surface	Black anodised		
Dimensions (mm)	127.8 x 85.8 x 44 (L x W x H)		
Function	For holding a total of 6 vessels Ø 30.6–32.2 x 48–56 mm with flat bottom		

Thermoblocks for Epsilon

Thermoblock		Order number	110197
Material	Aluminium		
Surface	Black anodised		
Dimensions (mm)	127.8 x 85.8 x 61 (L x W x H)		
Function	For holding a total of 6 vessels Ø 32.5–34.2 x 69–81 mm with round bottom		

Thermoblock		Order number	110192
Material	Aluminium		
Surface	Black anodised		
Dimensions (mm)	127.8 x 85.8 x 66.5 (L x W x H)		
Function	For holding a total of 4 vessels Ø 42.3–44.5 x 51–60 mm with flat bottom		

Thermoblock		Order number	110324
Material	Aluminium		
Surface	Black anodised		
Dimensions (mm)	127.8 x 85.8 x 42 (L x W x H)		
Function	For holding a total of 2 vessels Ø 57.2–59.5 x 42–49 mm with flat bottom		

Overview

Item number	Block dimensions (mm)	Number of vials	Vial diameter (mm) Height (mm)	Number of thermoblocks per shelf			
				Epsilon 1-4 LSCplus Epsilon 2-4 LSCplus 270 x 400 mm (W x L)	Epsilon 2-6D LSCplus 225 x 300 mm (W x L)	Epsilon 2-10D LSCplus 350 x 400 mm (W x L)	Epsilon 2-12D 350 x 400 mm (W x L)
112428	127.8 x 85.8 x 30	30	7.6-8 x 35-41	9	5	12	12
110382	127.8 x 85.8 x 48	40	9.6-10.2 x 48.5-57	9	5	12	12
112290	127.8 x 85.7 x 31.5	40	10-10.6 x 36.5-43	9	5	12	12
110534	127.8 x 85.8 x 43	30	10.4-11 x 51-60	9	5	12	12
110535	127.8 x 85.8 x 23	48	11-11.6 x 28-33	9	5	12	12
110356	127.8 x 85.8 x 72	48	11.3-12 x 79-93	9	5	12	12
113309	127.8 x 85.8 x 50	35	12.1-12.8 x 55-64	9	5	12	12
110216	127.8 x 85.7 x 21	35	12.6-13.3 x 27-31	9	5	12	12
110220	127.8 x 85.8 x 38	35	13.8-14.6 x 44-51	9	5	12	12
110054	127.8 x 86 x 28	35	14-14.8 x 33-38	9	5	12	12
110275	127.8 x 85.8 x 45	12	14.1-15 x 43-50	9	5	12	12
110385	198 x 99 x 35	50	15 x 45	4	3	6	6
110355	127.8 x 85.8 x 72	24	15.1-16 x 72-84	9	5	12	12
110191	127.8 x 85.8 x 44	24	15.8-16.8 x 44-51	9	5	12	12
110374	127.8 x 85.8 x 35	24	16.1-17.1 x 41.5-48	9	5	12	12
110300	127.8 x 85.8 x 72	24	16.3-17.3 x 72-84	9	5	12	12
112344	127.8 x 85.8 x 30	24	17.3-18.3 x 36-42	9	5	12	12
110364	127.8 x 85.8 x 38	18	19.2-20.2 x 46-54	9	5	12	12
110370	127.8 x 85.7 x 25	18	20.2-21.2 x 33-38	9	5	12	12
110305	127.8 x 85.8 x 61	12	21.9-23 x 68-80	9	5	12	12
110219	127.8 x 85.8 x 38	12	23.2-24.4 x 45-53	9	5	12	12
110322	127.8 x 85.7 x 31.5	12	24-25.2 x 33.5-39	9	5	12	12
110321	127.8 x 85.7 x 31	10	24-25.2 x 38-44	9	5	12	12
110511	187.5 x 134.5 x 20	35	24 x 45	4	2	4	4
110368	127.8 x 85.8 x 38	10	26.4-27.7 x 45-53	9	5	12	12
110304	127.8 x 85.8 x 61	10	26.6-28 x 68-80	9	5	12	12
110301	127.8 x 93 x 65	12	26.2-27.5 x 70-82	8	4	8	8
110533	127.8 x 85.8 x 63	11	27.5-28.9 x 70-82	9	5	12	12
110376	127.8 x 85.8 x 38	8	28.7-30.2 x 45-53	9	5	12	12
110190	127.8 x 85.4 x 44	6	30.6-32.2 x 48-56	9	5	12	12
110197	127.8 x 85.8 x 61	6	32.5-34.2 x 69-81	9	5	12	12
110192	127.8 x 85.8 x 66.5	4	42.3-44.5 x 51-60	9	5	12	12

Thermoblocks for Epsilon 2-4 / 2-10

Thermoblock		Order number	110245
Material	Aluminium		
Surface	Black anodised		
Dimensions (mm)	400 x 99 x 25 (L x W x H)		
Function	For holding a total of 150 vessels Ø 9.7–10.3 x 28–33 mm with round or flat bottom		
Remark	6-row block		

Thermoblock		Order number	112414
Material	Aluminium		
Surface	Black anodised		
Dimensions (mm)	400 x 115.5 x 32 (L x W x H)		
Function	For holding a total of 100 vessels Ø 10.2–10.8 x 34–40 mm or a total of 190 vessels Ø 9.1–9.6 x 36–42 mm		
Remark	Two-sided, designed for two vessel sizes		

Thermoblock		Order number	112411
Material	Aluminium		
Surface	Black anodised		
Dimensions (mm)	400 x 63 x 45 (L x W x H)		
Function	For holding a total of 50 vessels Ø 10.2–10.8 x 48–56 mm (Eppendorf caps)		

Thermoblock		Order number	112413
Material	Aluminium		
Surface	Black anodised		
Dimensions (mm)	400 x 113.8 x 45 (L x W x H)		
Function	For holding a total of 100 vessels Ø 10.2–10.8 x 48–56 mm (Eppendorf caps)		
Remark	Vials placed stepwise at an angle of 60° in four rows		

Thermoblock		Order number	112220
Material	Aluminium		
Surface	Black anodised		
Dimensions (mm)	296 x 219 x 5 (L x W x H)		
Function	For holding a total of 88 vessels Ø 14.5–15.4 x 13–15 mm		

Thermoblock		Order number	112434
Material	Aluminium		
Surface	Black anodised		
Dimensions (mm)	200 x 270 x 30 (L x W x H)		
Function	For holding a total of 108 vessels Ø 16 x 35 mm with flat bottom (2R vials)		

Thermoblock		Order number	112435
Material	Aluminium		
Surface	Black anodised		
Dimensions (mm)	225 x 300 x 30 (L x W x H)		
Function	For holding a total of 130 vessels Ø 16 x 35 mm with flat bottom (2R vials)		

Thermoblock		Order number	112483
Material	Aluminium		
Surface	Black anodised		
Dimensions (mm)	400 x 80 x 62 (L x W x H)		
Function	For holding a total of 11 vessels Ø 27.8–29.2 x 65–76 mm (50 ml flask)		
Remark	1-row block		

Overview

Item number	Block dimensions (mm)	Number of vials	Vial diameter (mm) Height (mm)	Number of thermoblocks per shelf			
				Epsilon 1-4 LSCplus Epsilon 2-4 LSCplus 270 x 400 mm (W x L)	Epsilon 2-6D LSCplus 225 x 300 mm (W x L)	Epsilon 2-10D LSCplus 350 x 400 mm (W x L)	Epsilon 2-12D 350 x 400 mm (W x L)
110245	400 x 99 x 25	150	9.7-10.3 x 28-33	2	0	3	3
112414	400 x 115.5 x 32	100	10.2–10.8 x 34-40	2	0	3	3
112411	400 x 63 x 45	50	10.2–10.8 x 48-56	4	0	6	5
112413	400 x 113.8 x 45	100	10.2–10.8 x 48-56	2	0	3	4
112220	296 x 219 x 5	88	14.5-15.4 x 13-15	1	1	1	2
112434	200 x 270 x 30	108	16 x 35	2	1	2	2
112435	225 x 300 x 30	130	16 x 35	1	1	1	2
112483	400 x 80 x 62	11	27.8-29.2 x 65-76	3	0	4	5

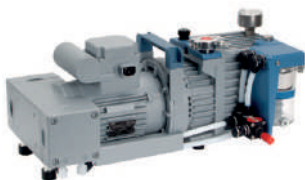
Thermoblocks for Epsilon 2-12D

Thermoblock		Order number	110296
Material	Aluminium		
Surface	Black anodised		
Dimensions (mm)	290.5 x 89.2 x 90 (L x W x H)		
Function	For holding a total of 75 vessels Ø 14.5–15,2 x 100–115 mm		

Thermoblock		Order number	110303
Material	Aluminium		
Surface	Black anodised		
Dimensions (mm)	231.3 x 80 x 85 (L x W x H)		
Function	For holding a total of 44 vessels Ø 16 x 100 mm with round bottom		

6.1 Vacuum pumps

Vacuum pumps



Chemical hybrid vacuum pump

Order number

125295

Model	RC6
Suction capacity	5.9 m ³ /h
Power	230V, 50/60 Hz
Features	With small flange coupling DN 16
Remark	Final vacuum 2 x 10 ⁻³ mbar

Chemical hybrid vacuum pump

Order number

125296

Model	RC6
Features	Emissions condenser and trap, for substances containing solvents
Suction capacity	5.9 m ³ /h
Power	230V, 50/60 Hz
Features	With small flange coupling DN 16
Remark	Final vacuum 2 x 10 ⁻³ mbar

Vacuum pump (chemical-resistant rotary-vane pump)

Order number

125261

Model	Pascal 2010 C1
Suction capacity	10 m ³ /h
Power	230V, 50/60 Hz
Features	With small flange coupling DN 25
Remark	Final vacuum 2 x 10 ⁻³ mbar

Vacuum pump (chemical-resistant rotary-vane pump)

Order number

125263

Model	Pascal 2021 C1
Suction capacity	21 m ³ /h
Power	230V, 50/60 Hz
Features	With small flange coupling DN 25
Remark	Final vacuum 2 x 10 ⁻³ mbar



Vacuum pump (rotary-vane pump)

Order number 125302

Model	RZ 2,5
Suction capacity	2.3 m ³ /h
Power	230 V, 50/60 Hz
Features	With small flange coupling DN 16
Remark	Final vacuum 2 x 10 ⁻³ mbar



Vacuum pump (rotary-vane pump)

Order number 125307

Model	RZ 6
Suction capacity	5.7 m ³ /h
Power	230 V, 50/60 Hz
Features	With small flange coupling DN 16
Remark	Final vacuum 2 x 10 ⁻³ mbar



Vacuum pump:

Order number 125317

Model	DUO 10
Suction capacity	11.1 m ³ /h
Power	230 V, 50/60 Hz
Features	With small flange coupling DN 25/25
Remark	Final vacuum 2 x 10 ⁻³ mbar

Vacuum pump:

Order number 125318

Model	DUO 20
Suction capacity	20 m ³ /h
Power	230 V, 50/60 Hz
Features	With small flange coupling DN 25/25
Remark	Final vacuum 2 x 10 ⁻³ mbar



Vacuum pump:

Order number 125245

Model	nXDS 10i
Suction capacity	11.4 m ³ /h
Power	200–240 V, 50/60 Hz
Remark	Final vacuum <0,01 mbar
Features	With small flange coupling DN 25/25

6.2 Vacuum pump oil

Vacuum pump oil

P3 pump oil		Order number	126181
Contents	1l bottle		
Pumps	RZ / RC / DUO		

Pump oil		Order number	126185
Contents	5l cannister		
Pumps	RZ / RC / DUO		

Pump oil		Order number	126200
Contents	20l cannister		
Pumps	RZ / RC / DUO		

6.3 Vacuum hoses

Vacuum hoses



Vacuum hose		Order number	125702
Length	1 m		
Features	With standard flange couplings DN 16/DN 25		

Vacuum hose		Order number	125706
Length	1.5 m		
Features	With standard flange couplings DN 16/DN 25		

Vacuum hose		Order number	125704
Length	1 m		
Features	With standard flange couplings DN 25/ DN 25		

Vacuum hose		Order number	125705
Length	1.5 m		
Features	With standard flange couplings DN 25/ DN 25		

6.4 Vacuum accessories

Vacuum accessories



Micro aeration valve

Order number 125931

Features	With hose fitting
----------	-------------------



Micro vent valve

Order number 125932

Features	With hose fitting and pipe bend, DN25 / DN25
----------	--



Electromagnetic pressure control valve

Order number 125910

Function	For installation in the suction line of the vacuum pump
Features	With DN 25 / DN25
Remark	Usable for all laboratory freeze dryer and Epsilon 1-4/2-4 LSCplus



Manual stop valve

Order number 125920

Function	For the vacuum hose between LDplus series freeze dryer systems and the vacuum pump (in place of the solenoid pressure control valve 125910)
Features	With standard flange DN 25 / DN25



Exhaust filter

Order number 125501

Remark	For vacuum pumps 125302 / 125307
--------	----------------------------------



Replacement filter cartridge

Order number 125509

Remark	For 125501
--------	------------



Exhaust filter		Order number	125502
Model	ONF 25 L		
Features	With automatic oil return		
Note: for Duo pump			
Exhaust filter		Order number	125503
Model	ONF 25 L		
Features	Without automatic oil return		
Note: for Duo pump			
Replacement filter cartridge		Order number	125510
Remark	For 125502 and 125503		



Vacuum sensor		Order number	125478
Model	VCP 63 MV		
Connection	With integrated signal processing for direct connection to the freeze drying system		
Measuring range	1000 – 0.001 mbar		
Measuring principle	Pirani		
Features	With connecting cable, clamping/centring and T fitting		
Warranty	6 months		
Note	These sensors are wear parts whose service life is largely dependent on the proper use and handling of the freeze dryer		
Note: only for Alpha 1-2 LDplus			
Vacuum sensor		Order number	125488
Model	VCP 63 MV		
Connection	With integrated signal processing for direct connection to the freeze drying system		
Measuring range	1000 – 0.001 mbar		
Measuring principle	Pirani		
Features	With connecting cable, clamping/centring and T fitting		
Warranty	6 months		
Note	These sensors are wear parts whose service life is largely dependent on the proper use and handling of the freeze dryer		
Replacement sensor		Order number	125468
Model	VCP 63 MV		
Warranty	6 months		

Vacuum sensor		Order number	125491
Modell	CMR 363		
Connection	Preferably for pilot systems and for laboratory units		
Measuring range	10-0.05 hPa (mbar) or lower with reduced accuracy		
Measuring principle	Capacitive		
Warranty	6 months		
Note	These sensors are wear parts whose service life is largely dependent on the proper use and handling of the freeze dryer		



Chemical-resistant vacuum sensor

Order number

125476

Model	TPR281
Connection	With integrated signal processing for direct connection to the freeze drying system
Measuring range	1000 – 0.001 mbar
Measuring principle	Pirani
Features	Complete with connecting cable, two centring and clamping rings and T fitting DN 25/25 ISO-KF
Warranty	6 months
Note	These sensors are wear parts whose service life is largely dependent on the proper use and handling of the freeze dryer

Replacement sensor

Order number

125466

Model	TPR281
Connection	For connection to system controller; chemical resistant
Warranty	6 months
Note	These sensors are wear parts whose service life is largely dependent on the proper use and handling of the freeze dryer



High-vacuum grease

Order number

126210

Remark	
--------	--

7.1 Software and hardware

Software and hardware

Program selection module

Order number

125099

Model	PGM-30
Function	LSCplus system controller extension module for 30 user-defined individual programs
Control	Control of temperature and pressure profiles and individual process steps (freezing, primary drying, secondary drying)
Features	Very easy to use thanks to integration into system controller and guided data entry; supports entry and deletion of individual steps

LyoControlplus

Order number

125050

Function	Determination of eutectic point
Features	Includes sensors for temperature and resistance
Note	For use in combination with LSCplus system controller and LyoLogplus documentation software



Documentation software LyoLogplus

Order number

125025

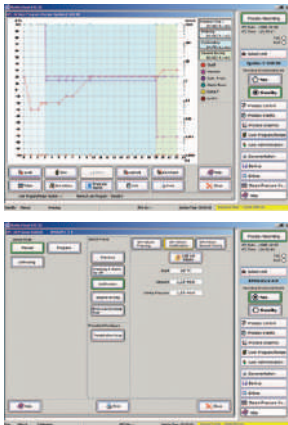
Function	Windows-based software for logging relevant process parameters: ice condenser temperature, product temperature, shelf temperature, vacuum, and/or Lyo-Rx (depending on freeze dryer configuration)
Features	Supports export in PDF and Excel file formats

USB

Order number

125037

Model	Process data logging for equipment with LSCplus system controller
Function	For graphical process display
Includes	USB stick, LyoLogplus installation CD



LPCplus process visualisation		Order number	125042
Model	LPCplus		
Function	Software for standard PCs for data transfer and freeze drying system monitoring in combination with LSCplus system controller		
Includes	LPC software on diskettes, 1 connecting cable, installation and operation manual, Laptop with operating system		
Note	Laptop included		

7.2 Sensors

Sensors



Product sensor		Order number	124812
Model	PT 100		
Cable length approx.	0.26 m		
Features	With precision connector for use with LSCplus controller		



Product sensor		Order number	124799
Model	PT 100		
Cable length approx.	0.8 m		
Features	With precision connector		
Remark	Epsilon		

Product sensor		Order number	124800
Model	PT 100		
Cable length approx.	1.3 m		
Features	With precision connector		
Remark	Epsilon		

Product sensor		Order number	124801
Model	PT 100		
Cable length approx.	2 m		
Features	With precision connector		
Remark	Epsilon		



Sensor for temperature and resistance		Order number	124809
Function	For LyoControlplus		
Remark	With precision connector for use with LSCplus system controller		
Cable length	0,26 m		



Sensor for temperature and resistance		Order number	125130
Function	For LyoControl and LyoControlplus		
Remark	Epsilon		
Cable length	0,8 m		

8 Cooling Baths and Freezing Equipment

Cooling Baths and Freezing Equipment



Cooling bath		Order number	101840
Model	CB 18-40		
Dimensions (mm)	410 x 450 x 460		
Bath depth	200 mm		
Bath opening (mm)	300 x 327 (W x L)		
Characteristics	Air cooled		
Features	Stainless steel tank with integrated condensate drain, digital display and actual ice condenser temperature indication		
Capacity	18 litres		
Bath temp.	Approx. -40 °C		
Power	230 V, 50 Hz		
Note	For connection of 1 or 2 rotators		
Features	Non-halogenated chilling media		



Rotator with support rod		Order number	120720
Function	For freezing liquids in round-bottom flasks		
Weight approx.	3.8 kg		
Power	230 V, 50 Hz		
Features	Speed continuously variable from 60 to 2000 rpm		



Horizontal roller rotator		Order number	120726
Material	Stainless steel		
Weight approx.	11.5 kg		
Application	For 1 or 2 1200-ml wide-neck filter bottles		
Power	220 V, 50 Hz		
Features	Speed continuously variable from 60 to 2000 rpm		

Therminol D12		Order number	130345
Quantity	5 l cannister		

Therminol D12		Order number	130350
Quantity	10 l cannister		

Therminol D12		Order number	130360
Quantity	20 l cannister		

Rotor program

Fixed-angle rotors for RVC 2-18 CDplus

All the products included in this table are solvent-resistant (not acid-resistant). They are made of aluminium (black anodised).

Vessel			Rotor		
Nominal volume	Dimensions	Description Standard Features	Vessels per rotor	Rotors per unit	Part no. Configuration Setting angle (reference: vertical)
(ml)	Ø x length (mm)		(pcs.)	(pcs.)	
0.25 0.50	5.8 x 47	Reaction vessel	40	2 ¹⁾	Solid rotor 30° 110334 
0.50 0.75	7.9 x 28	Eppendorf	30	3	124505 Solid rotor 45° 
1.5 2.2	10.8 x 38	Eppendorf	24	3	124502 Solid rotor 45° 
2.0	10.7 x 72	With round or flat bottom	12		112250³⁾ Adapter receiver 25° 
2.0	11.2 x 36	With flat bottom	36	3	110188 Solid rotor 40° 
2.0	16.1 x 56	With flat bottom, micro reaction vessel	18	2 ¹⁾	112351 Solid rotor 22° 
2.5	11.7 x 32	Chromacol, with flat bottom	24	3	110517 Solid rotor 40° 

Rotor program

Vessel			Rotor		
Nominal volume	Dimensions	Description Standard Features	Vessels per rotor	Rotors per unit	Part no. Configuration Setting angle (reference: vertical)
(ml)	Ø x length (mm)		(pcs.)	(pcs.)	
2.5	12 x 36	With round or flat bottom	24	3	110327 Solid rotor 40°
4.0 7.0	12.5 x 70 – 100	DIN 58970	18	1	124512 Disc rotor 25°
5.0	15 x 45	With flat bottom	18	2 ¹⁾	112328 Solid rotor 40°
5.5	15.6 x 57	With flat bottom	18	2 ¹⁾	110514 Solid rotor 22°
10.0	16 x 150	With round bottom	8	1	112319 Disc rotor 32°
10.0	20 x 62	With round or flat bottom, micro reaction vessel	12	1	110265 Disc rotor 25°
10.0 15.0 alt. 15.0 18.0	16.5 x 80 – 100 alternatively 16.5 x 100 – 125	DIN 58970	12 alt. 6	1	124516 Disc rotor 25°






Rotor program

Vessel			Rotor		
Nominal volume	Dimensions	Description Standard Features	Vessels per rotor	Rotors per unit	Part no. Configuration Setting angle (reference: vertical)
(ml)	Ø x length (mm)		(pcs.)	(pcs.)	
30.0	23.8 – 25 x 106 – 120	With round bottom	8	1	110242 Disc rotor 18° 
50.0	28 – 28.5 x 107	With round bottom	6	1	110226 Disc rotor 20° 
50.0	29.5 – 30 x 105 – 120	Falcon	6	1	112383 Disc rotor 20° 
50.0	34 x 100	DIN 58970	6	1	110252 Disc rotor 20° 
	Outside: 50 x 20		--	--	110393 Distance ring 

Fixed-angle rotors for RVC 2-18 CDplus in HCl version

All of the products included in this table are acid-resistant and, to a limited extent, also solvent-resistant. They are made of polypropylene (PP), polyvinylidene fluoride (PVDF), and nickel (Ni).

Rotor program

Vessel			Rotor		
Nominal volume	Dimensions	Description Standard Features	Vessels per rotor	Rotors per unit	Part no. Configuration Material Setting angle (reference: vertical)
(ml)	Ø x length (mm)		(pcs.)	(pcs.)	
0.25 0.50	5.8 x 47	Reaction vessel	40	2 ⁵⁾	112360 Solid rotor PVDF 30° 
1.5 2.2	10.8 x 38	Eppendorf	24	2 ⁵⁾	112239 Solid rotor PVDF 45° 
2.0	11.6 x 32	With flat bottom	24	3	110212 Solid rotor PVDF 40°
4.0 7.0	12.5 x 70 – 100	DIN 58970 with round or flat bottom	18	1	112261 Solid rotor PVDF 25° 
5.0	15 x 45	With flat bottom	18	2	110211 Solid rotor PP 40°
5.0	15 x 45	With flat bottom	18	2	112298 Solid rotor PVDF 40°
9.0	13 x 100 13 x 70 – 100	Pyrex® no. 9826 with round or flat bottom	18	1	112376⁴⁾ Disc rotor PVDF, Ni 25°

Rotor program

Vessel			Rotor		
Nominal volume	Dimensions	Description Standard Features	Vessels per rotor	Rotors per unit	Part no. Configuration Material Setting angle (reference: vertical)
(ml)	Ø x length (mm)		(pcs.)	(pcs.)	
10.0 to 15.0	15.8 – 16.8 x 78 – 100 alternatively 15.8 – 16.8 x 100 – 125	DIN 58970	12 alt. 6	1	112331 Disc rotor PVDF, Ni 25° 
50.0	27.3 – 28.7 x 87 – 120	With round bottom	6	1	112332 Disc rotor PVDF, Ni 20°
50.0	29.5 – 30 x 105 – 120	Falcon	6	1	112382 Disc rotor PVDF, Ni 20°
	Outside: 50 x 20		--	--	112361 Distance ring PVDF 

¹⁾ In order to use two rotors, a distance ring, part no. 110393, must be installed between the rotors.

²⁾ Only in conjunction with fixed-angle disc rotor, part no. 124512

³⁾ Only in conjunction with fixed-angle disc rotor, part no. 124516






⁴⁾ Delivery time on request, subject to technical changes.

⁵⁾ In order to use two rotors, a distance ring, part no. 112361, must be installed between the rotors.

Rotor program

Fixed angle rotors

All products consist of aluminium, black anodized.

Vessel			Rotor			
Nominal volume	Dimensions	Description Standard Features	Vessels per rotor	Rotors per unit	Part no.	Configuration Setting angle (Reference: vertical)
(ml)	Ø x length (mm)		(pcs.)	(pcs.)		
0.2	6 x 20	Eppendorf	72	3	110283	
					Solid rotor 45°	
0.5 0.75	7.9 x 28	Eppendorf	54	3	124554¹⁾	
					Solid rotor 45°	
1.5 2.2	10.8 x 38	Eppendorf	36	3	124552	
					Solid rotor 45°	
ca. 2.0	12 x 36	with flat bottom	36	3	110369	
					Solid rotor 40°	
2.0 4.0	11.6x 32 12.7 x 46	with flat bottom both vessel types can be used simultaneously	36	2	110507	
					Solid rotor (combination rotor) 28°	
5.0	14.7 x 45	with flat bottom	30	2 ⁴⁾	110391⁴⁾	
					Solid rotor 30°	
5.0	16.5 x 35	with flat bottom, front-side thread Ø 18 mm x 6 mm	24	3	110392¹⁾	
					Solid rotor 40°	

Rotor program

Vessel			Rotor		
Nominal volume	Dimensions	Description Standard Features	Vessels per rotor	Rotors per unit	Part no. Configuration Setting angle (Reference: vertical)
(ml)	Ø x length (mm)		(pcs.)	(pcs.)	
5.0 7.0	12.5 x 75 - 85	with round bottom	48	1	124562 Disc rotor 30° 
8.0 10.0	12 – 13 x 100 – 120	with round bottom	36	1	124563 Disc rotor 25° 
9.0	16.5 – 17 x 60 – 120	with round or flat bottom	24	1	124564 Disc rotor 20° 
10.0	19 – 20.5 x 40 – 48		24	2	124582 Disc rotor 23° 
10.0 12.0 15.0	16 – 16.5 x 80 – 125	with round bottom, Falcon	24	1	124566 Disc rotor (reversible rotor) 20° 
15.0	18 x 100 or 18 x 125	with round bottom	36 or 27	1	110515 Disc rotor 20° 
20.0	26.6 – 28 x 55 – 71	with flat bottom	16	1	112460 Disc rotor 25° 

Rotor program

Vessel			Rotor		
Nominal volume	Dimensions	Description Standard Features	Vessels per rotor	Rotors per unit	Part no. Configuration Setting angle (Reference: vertical)
(ml)	Ø x length (mm)		(pcs.)	(pcs.)	
30.0	24 x 105 – 120 or 25 x 105	with round bottom	12	1	124575 Disc rotor 25° 
50.0	29.5 – 30 x 115 – 120	Falcon	8	1	124580 Disc rotor 30° 
50.0	34.5 x 100 – 120		8	1	124584 Disc rotor 28° 
60.0	27.1– 28.5x 104 – 140		12	1	124581 Disc rotor 18° 
100.	45 x 100 – 120		6	1	124595 Disc rotor 28° 
--	outside: 50 x 20		--	--	110393 Distance ring 

¹⁾ In order to use two rotors, a distance ring, part no. 110393 can be installed to ensure equal evaporation between the two rotors.

²⁾ Only in conjunction with fixed-angle disc rotor, part no. 124562

³⁾ Delivery time on request, subject to technical relations.

⁴⁾ In order to use two rotors, a distance ring, part no. 110393, must be installed between the rotors.

⁵⁾ Only in conjunction with fixed-angle disc rotor, part no. 124575

⁶⁾ Only in conjunction with fixed-angle disc rotor, part no. 110515

Rotor program**Swing-out rotors**

All products included in this table consist of aluminium, black anodized.

Vessel			Remarks	Part no.	
Quan- tity (pcs.)	max. dimensions W x D x H (mm)	Description		Configuration Setting angle (reference: vertical)	
2	86.5 x 128.5 x 20.3	Mikrotitre plate	Basic rotor	124600 Swing-out rotor with 2 carriers 90° (swinging out fully)	
2	86.5 x 128.5 x 44.0	Deepwell plate	Set Caution: Use rotor no. 124601 only in conjunction with the rotor shaft with mag- netic coupling Nr. 112280!	124561 Swing-out rotor with 2 carriers for deepwell plates no. 124601, incl. rotor shaft with magnetic coupling no. 112280 90° (swinging out fully)	

Rotor program

Fixed-angle rotors

All products consist of aluminium (black anodised).

Vessel			Rotor		
Nominal volume	Dimensions	Description Standard Features	Vessels per rotor	Rotors per unit	Part no. Configuration Setting angle (Reference: vertical)
(ml)	Ø x length (mm)		(pcs.)	(pcs.)	
1.5	11 – 12 x 31 – 39	round or flat bottom basic rotor for 126305	54	1 + 2	124534 massive rotor 25° 
1.5	11 – 12 x 31 – 39	round or flat bottom extension rotor for 124534	54	max. 2	126305 massive rotor 25° 
1.5 – 2.2	10.8 x 38	Eppendorf basic rotor for 126300	72	1 + 2	124532 massive rotor 45° 
1.5 – 2.2	10.8 x 38	Eppendorf extension rotor for 124532	72	max. 2	126300 massive rotor 45° 
2.5	10 x 40 – 50	basic rotor for 126307	54	1 + 2	112378 massive rotor 25° 

Rotor program


Vessel			Rotor		
Nominal volume	Dimensions	Description Standard Features	Vessels per rotor	Rotors per unit	Part no. Configuration Setting angle (Reference: vertical)
(ml)	Ø x length (mm)		(pcs.)	(pcs.)	
5.0	15 x 50	flat bottom basic rotor for 126303	72	1 + 1	124515 disc rotor 30° 
5.0	15 x 50	flat bottom extension rotor for 124515	72	max. 1	126303 disc rotor 30° 
5.5	14.7 x 45	round or flat bottom	40	3	112228²⁾ massive rotor 30° 
5.0 / 9.0	12 – 13 x 100 – 120	round bottom basic rotor for 126306	72	1 + 1	124524 disc rotor 30° 
5.0 / 9.0	12 – 13 x 100 – 120	round bottom extension rotor for 124524	72	max. 1	126306 disc rotor 30° 
10.0	16 – 17 x 65 – 100	basic rotor for 126302	48	1 + 1	124518³⁾ disc rotor 30° 
10.0	16 – 17 x 65 – 100	extension rotor for 124518	48	max. 1	126302 disc rotor 30° 

Rotor program

Vessel			Rotor		
Nominal volume	Dimensions	Description Standard Features	Vessels per rotor	Rotors per unit	Part no. Configuration Setting angle (Reference: vertical)
(ml)	Ø x length (mm)		(pcs.)	(pcs.)	
10,0	26,5 – 28 x 80 – 109		32	1	124556³⁾ disc rotor 20°
10.0 12.0 15.0	16 – 16.5 x 80 – 125	round bottom, Falcon	48	1	124536 disc rotor (turn-over rotor) 20°
13.0	15.2 x 100 (vessel) 18 x 85 (cover)		48	--	110516⁴⁾ adapter cover
15.0	18 x 100 or 18 x 125		48	1	124538 disc rotor 20°
50.0	27 x 140		20	1	124539³⁾ disc rotor 22°
50.0	29.5 – 30 x 115 – 120	Falcon	18	1	124540 disc rotor 25°
50.0	34.5 x 100 – 120		12	1	124544 disc rotor 28°



Rotor program

Vessel			Rotor		
Nominal volume	Dimensions	Description Standard Features	Vessels per rotor	Rotors per unit	Part no. Configuration Setting angle (Reference: vertical)
(ml)	Ø x length (mm)		(pcs.)	(pcs.)	
100	45 x 100 – 120		12	1	124547 disc rotor 23° 
150	58.6 – 61 x 110 – 120	flat bottom Falcon	6	1	124546 disc rotor 20°
--		--	--	--	124533 distance ring
--		--	--	--	112227²⁾ distance ring

¹⁾ Only in conjunction with fixed-angle disc rotor, part no. 124522

²⁾ In order to use two rotors, a distance ring, part no. 110393, must be installed between the rotors.

³⁾ Delivery time on request, subject to technical relations.

⁴⁾ Only in conjunction with fixed-angle disc rotor, part no. 124538

⁵⁾ Only in conjunction with fixed-angle disc rotor, part no. 124528

⁶⁾ Only in conjunction with fixed-angle disc rotors, part no. 124527 and 126311

⁷⁾ Only in conjunction with fixed-angle disc rotors, part no. 112418 and 112419

Swing-out rotors

**WARNUNG**

The balance point of the loaded bucket must be located considerably below the pivotal point !

Plate		Rotor type and accessories			
Type	Dimensions	No. of plates per rotor	No. of plates per device	Part no.	
	B x T x H (mm)	(piece)	(piece)	Configuration Setting angle (Reference: vertical) Material	
MTP or AP or DWP	max. 86.5 x 128.5 x 15.9	6	12	124567	
	max. 86.5 x 128.5 x 25.9	4	8	1 set, consisting of	
	max. 86.5 x 128.5 x 60.0	2	4	2 rotors, no. 124511 1 coupling piece, no. 124553, 4 carriers, no. 124708, 4 carrier plates, no. 124704 4 carrier plates, no. 124705 90° aluminium, black anodized	
				124511	
				Swing-out rotor for microtiter plates (MTP) assay plates (AP) and deepwell plates (DWP) 90° (swinging out fully) aluminium, black anodized	
---	---	---	---	124553	
				Coupling piece, to connect two rotors no. 124511 aluminium, black anodized	
MTP or AP or DWP	max. 86.5 x 128.5 x 15.9	6	12	124708	
	max. 86.5 x 128.5 x 25.9	4	8	Carrier, without bottom window, for 3 MTP or 2 AP or 1 DWP, suitable for rotor no. 124511	
	max. 86.5 x 128.5 x 60.0	2	4	aluminium, black anodized	
				124704	
				Carrier plate with distance piece, red, height 6 mm, suitable for carrier no. 124708 aluminium, black anodized	

Rotor program

Plate		Rotor type and accessories			
Type	Dimensions	No. of plates per rotor	No. of plates per device	Part no.	
	B x T x H (mm)	(piece)	(piece)	Configuration Setting angle (Reference: vertical) Material	
				124705	
				Carrier plate with distance piece, blue, height 16 mm, suitable for carrier no. 124708 aluminium, black anodized	

Rotor program

Fixed-angle rotors

All products consist of aluminium (black anodised).

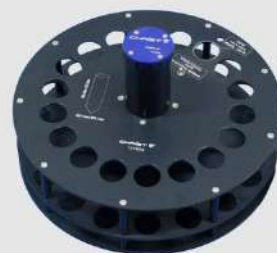
Vessel			Rotor		
Nominal volume	Dimensions	Description Standard Features	Vessels per rotor	Rotors per unit	Part no. Configuration Setting angle (Reference: vertical)
(ml)	Ø x length (mm)		(pcs.)	(pcs.)	
1.5 – 2.2	10.8 x 38	Eppendorf basic rotor for 126300	72	1 + 2	124610 massive rotor 45° 
1.5 – 2.2	10.8 x 38	Eppendorf extension rotor for 124610	72	2 max.	126300 massive rotor 45° 
2.5	11 x 31 – 39	 basic rotor for 126305	54	1 + 2	124613²⁾ massive rotor 25° 
2.5	11 x 31 – 39	 extension rotor for 124613	54	2 max.	126305 massive rotor 25° 
5.0	26.5 – 28 x 54.9 – 85		36	1	124636 disc rotor 25°
5.0	15.5 – 16.7 x 47 – 59	with round or flat bottom basic rotor for 126304	36	1 + 2	124620 massive rotor 30° 

Rotor program

Vessel			Rotor		
Nominal volume	Dimensions	Description Standard Features	Vessels per rotor	Rotors per unit	Part no. Configuration Setting angle (Reference: vertical)
(ml)	Ø x length (mm)		(pcs.)	(pcs.)	
5.0	15.5 – 16.7 x 47 – 59	with round or flat bottom extension rotor for 124620	36	2 max.	126304 massive rotor 30°
					
5.0	12.5 – 13.8 x 70.4 – 86	with round bottom, e.g. Sarstedt centrifuge tubes basic rotor for 126311	72	1 + 1	124627 disc rotor 20°
5.0 / 9.0	12 – 13 x 75– 100	with round bottom basic rotor for 126306	72	1 + 1	124614 disc rotor 30°
5.0 / 9.0	12 – 13 x 75 – 100	with round bottom extension rotor for 124614	72	max. 1	126306 disc rotor 30°
					
8.0 / 10.0	16 – 16.5 x 100 - 125	with round bottom, Falcon	48	1	124616 disc rotor 20°
					
10.0	16 – 17 x 65 – 100	 basic rotor for 126302	48	1 + 1	124617 disc rotor 30°
10.0	16 – 17 x 65 – 100	 extension rotor for 124617	48	max. 1	126302 disc rotor 30°
					
10.0	22.5 – 24 x 41 – 45	bottle, ISO 8362-1 10R basic rotor for 126309	27	1 + 2	124632 massive rotor 25°

Rotor program

Vessel			Rotor		
Nominal volume	Dimensions	Description Standard Features	Vessels per rotor	Rotors per unit	Part no. Configuration Setting angle (Reference: vertical)
(ml)	Ø x length (mm)		(pcs.)	(pcs.)	
10.0 12.0 15.0	16 – 16.5 x 80 – 125	with round bottom, Falcon	48	1	124621 disc rotor 20°
13.0	17 – 18 x 100 – 125		48	1	124618 disc rotor 20°
15.0	17.9 – 19 x 97 – 125	with round bottom	48	1	124622 disc rotor 20°
21.0	15.6 – 16.5 x 104.3 – 162.5	with round bottom	48	1	112357 disc rotor 20°
30.0	24 – 25 x 95 – 120		36	1	124625 disc rotor 25°
50.0	24 – 24.5 x 120 – 160		24	1	124624 disc rotor 18°
50.0	29.5 – 30 x 115 – 120		24	1	124630 disc rotor 25°
50.0	27.7 – 29.1 x 100 – 120	Falcon	18	1	124629 disc rotor 23°
50.0	32.8 – 34.5 x 100 – 120	with round bottom	16	1	124626 disc rotor 23°



Rotor program

Vessel			Rotor		
Nominal volume	Dimensions	Description Standard Features	Vessels per rotor	Rotors per unit	Part no. Configuration Setting angle (Reference: vertical)
(ml)	Ø x length (mm)		(pcs.)	(pcs.)	
55.0	24.1 – 25.3 x 105 – 166.4	with round bottom	24	1	112358 disc rotor 18° 
55.0 / 80.0	28 – 30 x 120 – 150	with round bottom	24	1	124628 disc rotor 20° 
70.0	24.1 – 25.3 x 143.9 – 203.8	with round bottom	20	1	112359 disc rotor 18° 
100	44 – 45 x 100 – 120	with round bottom	12	1	124645 disc rotor 23° 
150	58.6 – 61 x 110 – 120	with flat bottom, Falcon	8	1	124644 disc rotor 20°
250	68.2 – 71 x 137 – 139	Wheaton Lab Media Bottle 219927	6	1	124606 massive rotor 18°

¹⁾ only in conjunction with disc rotors, part no. 124614 and 126306

²⁾ delivery time on request, subject to technical modifications

³⁾ only in conjunction with disc rotors, part no. 124627 and 126311

⁴⁾ only in conjunction with disc rotors, part no. 124622 and 124618

Rotor program

- ⁵⁾ only in conjunction with disc rotor, part no. 124619
- ⁶⁾ only in conjunction with disc rotors, part no. 112420 and 112421
- ⁷⁾ only in conjunction with disc rotor, part no. 124623
- ⁸⁾ only in conjunction with disc rotor, part no. 112441

Rotor program**Swing-out rotors and accessories****WARNUNG**

The balance point of the loaded bucket must be located considerably below the pivotal point !

All products consist of aluminium (black anodised).

Plate		Rotor type and accessories			
Type	Dimensions B x T x H (mm)	No. of plates per rotor (piece)	No. of plates per device (piece)	Part no. Configuration	
				124511 Basic rotor with triple TMM Swing-out rotor for microtiter plates (MTP) assay plates (AP) deepwell plates (DWP) and massive bucket (MAB) with microtiter plate footprint	
MTP or AP or DWP	max. 86.5 x 128.5 x 15.9 max. 86.5 x 128.5 x 25.9 max. 86.5 x 128.5 x 60.0		3 2 1	124701 Carrier with integrated temperature sensor, without bottom window, suitable in rotor Nr. 124700 with carrier no. 124708; carrier plates no. 124704 and 124705 required	
MTP or AP or DWP	max. 86.5 x 128.5 x 15.9 max. 86.5 x 128.5 x 25.9 max. 86.5 x 128.5 x 60.0		3 2 1	124708 Carrier without temperature sensor, without bottom window, suitable in rotor Nr. 124700 with carrier no. 124701; carrier plates no. 124704 and 124705 required	
			2	124704 Carrier plate with distance pieces, red, height 6 mm, suitable for carrier no. 124701 and 124708	
			2	124705 Carrier plate with distance pieces, blue, height 16 mm, suitable for carrier no. 124701 and 124708	

Rotor program

Plate		Rotor type and accessories			
Type	Dimensions B x T x H (mm)	No. of plates per rotor (piece)	No. of plates per device (piece)	Part no. Configuration	
MAB	max. 86.5 x 128.5 x 60.0		1	124703 Carrier with integrated temperature sensor, without bottom window, suitable for rotor no. 124700 with carrier no. 124706	
MAB	max. 86.5 x 128.5 x 60.0		1	124706 Carrier without temperature sensor, without bottom window, suitable for rotor no. 124700 with carrier no. 124703	
		4	40	112290 Massive bucket, with thicker rim and pedestal, for vessels Ø 10,2 x 45,5 mm, suitable for 124703 and 124706	
DWP or MAB	max. 86.5 x 128.5 x 60.0 max. 86.5 x 128.5 x 60.0		1 1	124707 Carrier without temperature sensor, with bottom window, suitable for rotor no. 124700 with carrier no. 124711 and 124702	
MAB	max. 86.5 x 128.5 x 60.0		1	124702 Carrier with integrated temperature sensor, with bottom window, suitable for rotor no. 124700 with carrier no. 124702 The temperature sensor is positioned at the location hole of the massive bucket	
		4	48	110535 Massive bucket, for vessels Ø 11.0-11.7 x 28.0-33.0 mm, suitable for 124702 and 124707	

Rotor program

Plate		Rotor type and accessories			
Type	Dimensions B x T x H (mm)	No. of plates per rotor (piece)	No. of plates per device (piece)	Part no. Configuration	
		4	35	113309 Frame, for vessels Ø 12.0-12.8 x 53.2-64.2 mm, suitable for 124702 and 124707	
MTP or AP or DWP	max. 86.5 x 128.5 x 15.9	12	3	126350 1 Set, consisting of 2 carriers no. 124701, 2 carriers no. 124708, 4 carrier plates no. 124704, 4 carrier plates no. 124705, 1 sample temperature sensor no. 124764	
	max. 86.5 x 128.5 x 25.9	8	2		
	max. 86.5 x 128.5 x 60.0	4	1		
MAB	max. 86.5 x 128.5 x 60.0	4	1	126351 1 Set, consisting of 2 carriers no. 124703, 2 carriers no. 124706, 1 sample temperature sensor no. 124764	
MAB	max. 86.5 x 128.5 x 60.0	4	1	126352 1 Set, consisting of 2 carriers no. 124702, 2 carriers no. 124707, 1 sample temperature sensor no. 124764	

¹⁾ special design, on request, subject to technical modifications

Rotor program

All products consist of aluminium (black anodised).

Vessel		Rotor and accessories		
Nominal volume	Description	Vessels per rotor	Rotors per unit	Part no.
(ml)	Ø x length (mm)	(piece)	(piece)	Configuration
500	round bottom flask	4	1	124660 Basic rotor with triple-TMM Swing-out rotor for round bottom flasks, 500 ml, for 4 carriers 112433, 112440, 124664, 124665, 124667
			1	124667 Adapter cover Centre-cover 124664 or 124665 required
500	round bottom flask EN ISO 4797 each, with inner grinding 29/32		1	124664 Centre cover, complete, with temperature sensor, to accommodate one round bottom flask, adapter cover 124667 required, suitable for 124665
500	round bottom flask EN ISO 4797 each, with inner grinding 29/32		1	124665 Centre cover, complete, without temperature sensor, to accommodate one round bottom flask, adapter cover 124667 required, suitable for 124664
5 13	15.0 x 48.0 23.0 x 48.0	32 36	1	112433 Combined bucket, with temperature sensor, to accommodate 8 vessels of 5 ml and 9 vessels of 13 ml, suitable for 112440
5 13	15.0 x 48.0 23.0 x 48.0	32 36	1	112440 Combined bucket, with temperature sensor, to accommodate 8 vessels of 5 ml and 9 vessels of 13 ml, suitable for 112433

Rotor program

Vessel		Rotor and accessories			
Nominal volume	Description	Vessels per rotor	Rotors per unit	Part no. Configuration	
(ml)	Ø x length (mm)	(piece)	(piece)		
			1	124670	
				1 Set, consisting of 4 adapter covers no. 124667, 2 centre-covers no. 124664, 2 centre-covers no. 124665 1 sample temperature sensor no. 124764 <u>NOTE:</u> Use a round bottom flask with splinter protection coating (part no 127361)	
			1	124671	
				1 Set, consisting of 2 combined buckets no. 112433, 2 combined buckets no. 112440, 1 sample temperature sensor no. 124764	

Rotor program

All products consist of aluminium (black anodised).

Vessel		Rotor and accessories			
Nominal volume	Description	Vessels per rotor	Rotors per unit	Part no.	
(ml)	Ø x length (mm)	(piece)	(piece)	Configuration	
		4	1	124640 Basic rotor with Triple-TMM Swing-out rotor, for 4 buckets 124641, 124642, 124649, 124650, 124651, 124652, 154653, 154654, 124655, 124656, 124657, 124658	
15.0	Ø 16.2 mm x 114 mm	16	1	124641 Bucket 4 x 15 ml without temperature sensor	
15.0	Ø 16.2 mm x 114 mm	16	1	124642 Bucket 4 x 15 ml with integrated temperature sensor	

¹⁾ special design, on request, subject to technical modifications

Rotor program**Sample temperature sensors (temperature sensor element teflon-bonded/ -capsuled)**

Description	Dimensions (length), features	Part no.
Sample temperature sensor PT100	120 mm	124750
Sample temperature sensor PT100	140 mm	124754
Sample temperature sensor PT100	150 mm	124756
Sample temperature sensor PT100	160 mm	124758
Sample temperature sensor PT100	175 mm	124761
Sample temperature sensor PT100	190 mm	124764
Sample temperature sensor PT100	220 mm	124770
Sample temperature sensor PT100	280 mm	124782
Sample temperature sensor PT100	320 mm	124837

Sample holder temperature sensors(temperature sensor element in stainless steel cover)

Description	Dimensions (length), features	Part no.
Sample holder temperature sensor PT100	150 mm, for combined bucket no.112433	124785
Sample holder temperature sensor PT100	190 mm, marked, for carrier no.124702, 124703, 124711	124787
Sample holder temperature sensor PT100	220 mm, marked, for carrier no. 124701	124790

Tools

Description	Dimensions	Part no.
Torx screw driver	TX 8	988034



По вопросам продаж и поддержки обращайтесь:

Алматы (727)345-47-04
Ангарск (3955)60-70-56
Архангельск (8182)63-90-72
Астрахань (8512)99-46-04
Барнаул (3852)73-04-60
Белгород (4722)40-23-64
Благовещенск (4162)22-76-07
Брянск (4832)59-03-52
Владивосток (423)249-28-31
Владикавказ (8672)28-90-48
Владимир (4922)49-43-18
Волгоград (844)278-03-48
Вологда (8172)26-41-59
Воронеж (473)204-51-73
Екатеринбург (343)384-55-89

Иваново (4932)77-34-06
Ижевск (3412)26-03-58
Иркутск (395)279-98-46
Казань (843)206-01-48
Калининград (4012)72-03-81
Калуга (4842)92-23-67
Кемерово (3842)65-04-62
Киров (8332)68-02-04
Коломна (4966)23-41-49
Кострома (4942)77-07-48
Краснодар (861)203-40-90
Красноярск (391)204-63-61
Курск (4712)77-13-04
Курган (3522)50-90-47
Липецк (4742)52-20-81

Магнитогорск (3519)55-03-13
Москва (495)268-04-70
Мурманск (8152)59-64-93
Набережные Челны (8552)20-53-41
Нижний Новгород (831)429-08-12
Новокузнецк (3843)20-46-81
Ноябрьск (3496)41-32-12
Новосибирск (383)227-86-73
Омск (3812)21-46-40
Орел (4862)44-53-42
Оренбург (3532)37-68-04
Пенза (8412)22-31-16
Петрозаводск (8142)55-98-37
Псков (8112)59-10-37
Пермь (342)205-81-47

Ростов-на-Дону (863)308-18-15
Рязань (4912)46-61-64
Самара (846)206-03-16
Санкт-Петербург (812)309-46-40
Саратов (845)249-38-78
Севастополь (8692)22-31-93
Саранск (8342)22-96-24
Симферополь (3652)67-13-56
Смоленск (4812)29-41-54
Сочи (862)225-72-31
Ставрополь (8652)20-65-13
Сургут (3462)77-98-35
Сыктывкар (8212)25-95-17
Тамбов (4752)50-40-97
Тверь (4822)63-31-35

Тольятти (8482)63-91-07
Томск (3822)98-41-53
Тула (4872)33-79-87
Тюмень (3452)66-21-18
Ульяновск (8422)24-23-59
Улан-Удэ (3012)59-97-51
Уфа (347)229-48-12
Хабаровск (4212)92-98-04
Чебоксары (8352)28-53-07
Челябинск (351)202-03-61
Череповец (8202)49-02-64
Чита (3022)38-34-83
Якутск (4112)23-90-97
Ярославль (4852)69-52-93

Россия +7(495)268-04-70

Казахстан +7(727)345-47-04

Беларусь +(375)257-127-884

Узбекистан +998(71)205-18-59

Киргизия +996(312)96-26-47

эл.почта: mih@nt-rt.ru || сайт: <https://martinchrist.nt-rt.ru/>